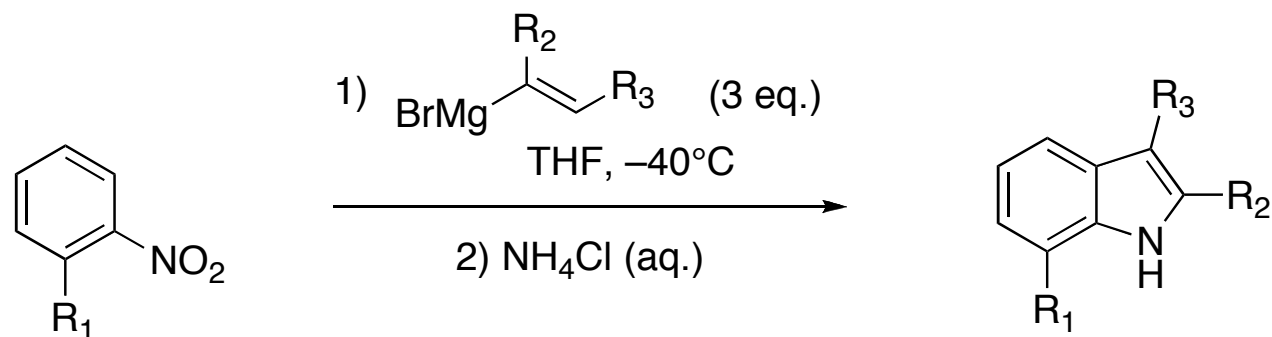


Bartoli Indole Synthesis

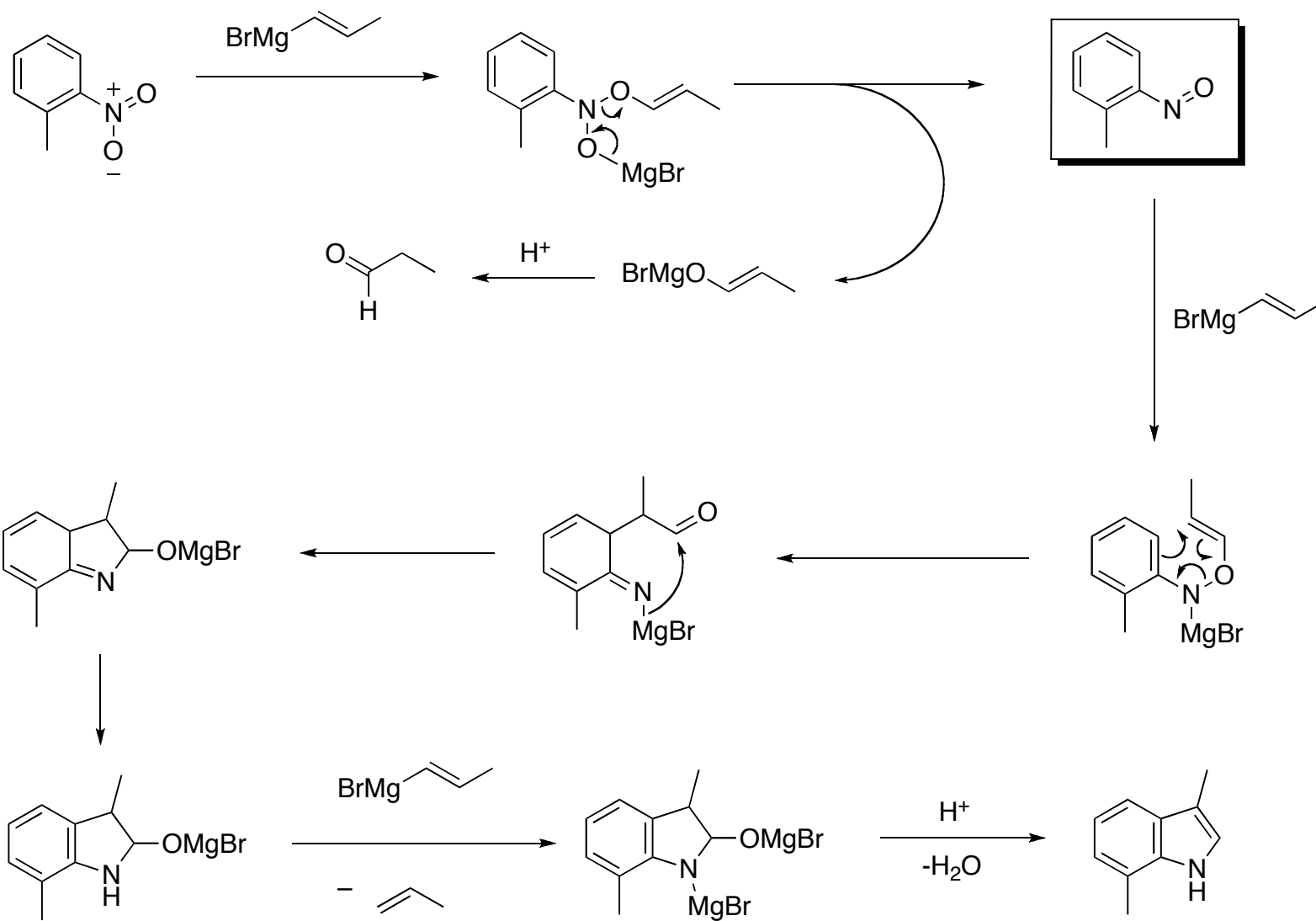
Alex Predeus
February 20, 2009

Bartoli Reaction

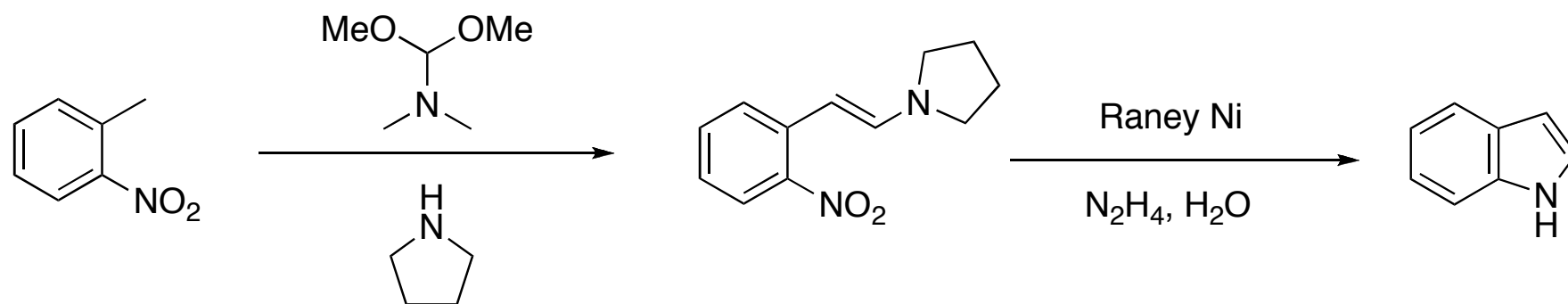


- presence of ortho-substituent is crucial;
- yields are moderate;
- R_1 - R_3 have to be tolerated by Grignard reagents.

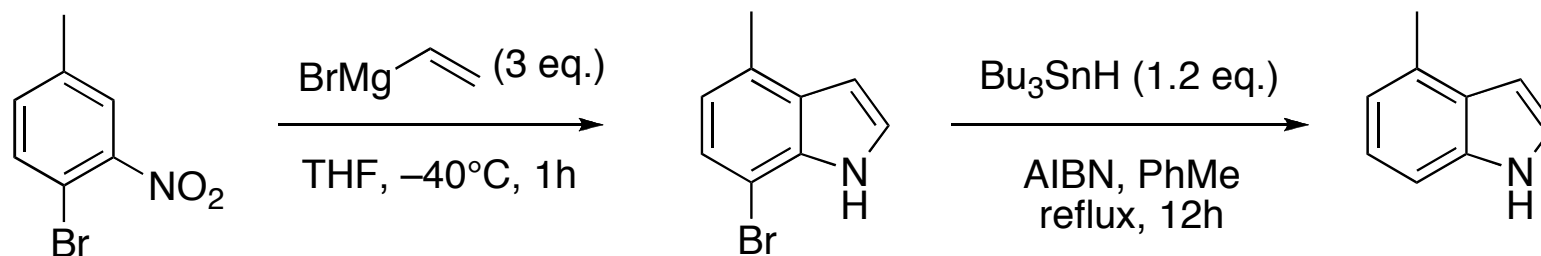
Reaction Mechanism



Synthetically Related Method: Leimgruber-Batcho Indole Synthesis



Dobbs Modification: Removal of the *ortho*-substituent



References

- Bartoli, G.; Palmieri, G.; Bosco, M.; Dalpozzo, R. *Tetrahedron Lett.* **1989**: 2129–2132.
- Bartoli, G.; Bosco, M.; Dalpozzo, R.; Palmieri, G.; Marcantoni, E. *J. Chem. Soc., Perkin Trans. 1* **1999**: 2757–2761
- A. P.; Voyle, M.; Whittall, N. *Synlett* **1999**: 1594–1596.
- Dalpozzo, R.; Bartoli, G. *Curr. Org. Chem* **2005**: 163–178.
- Dobson, D.; Todd, A.; Gilmore, J. *Synth. Commun* **1991**: 611–617.
- Dobson, D. R.; Gilmore, J.; Long, D. A. *Synlett* **1992**: 79–80.
- Bosco, M.; Dalpozzo, R.; Bartoli, G.; Palmieri, G.; Petrini, M. *J. Chem. Soc. Perkin Trans. 2* **1991**, 657-663.
- Dobbs, A. *J. Org. Chem.* **2001**: 638-641.