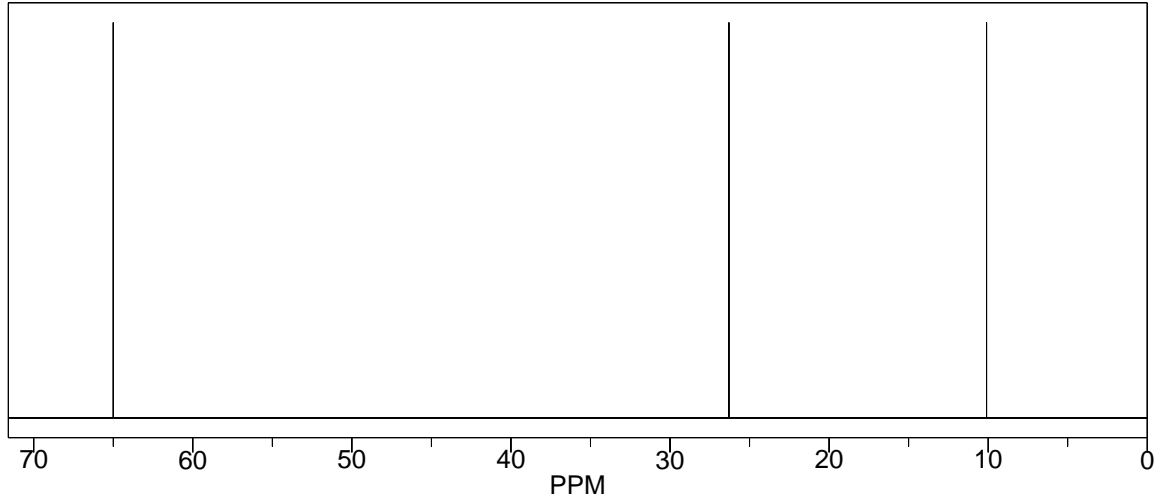
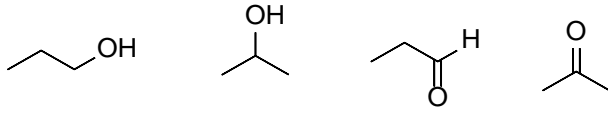
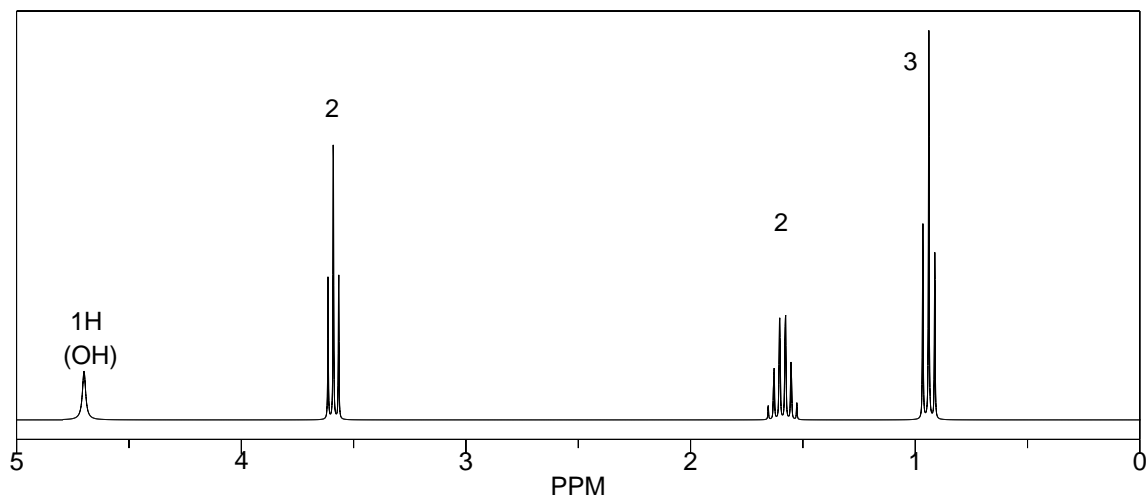
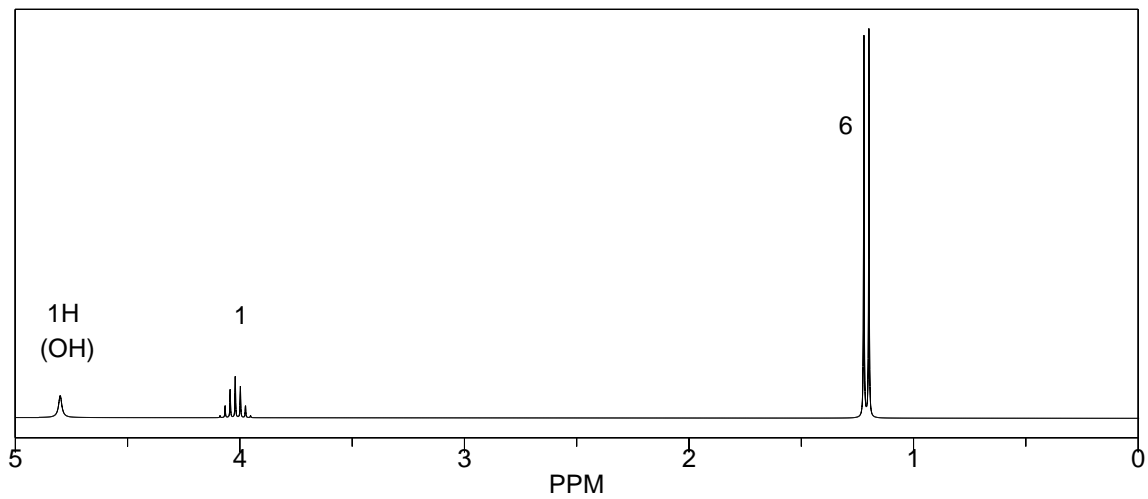
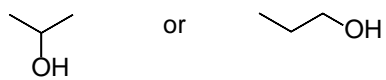
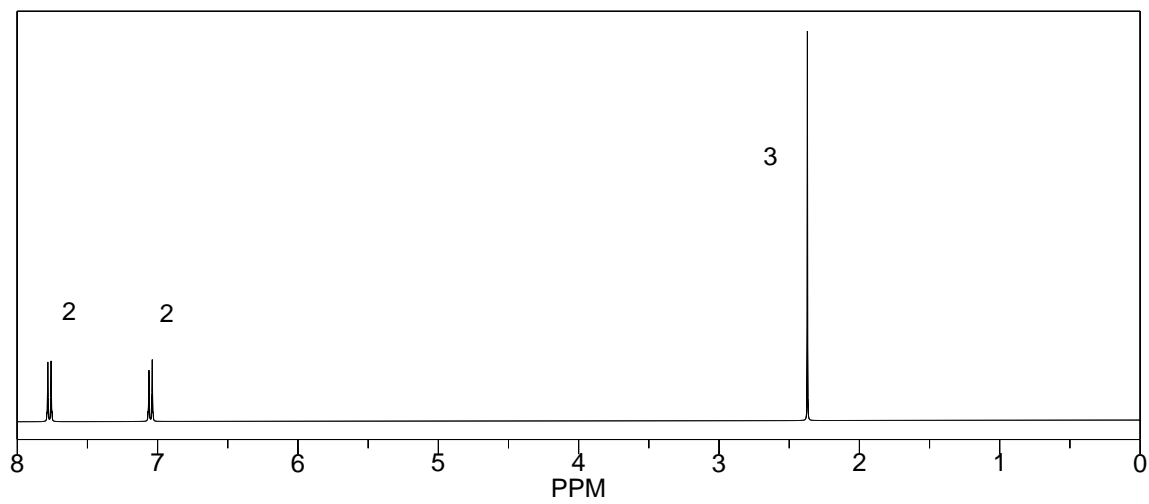
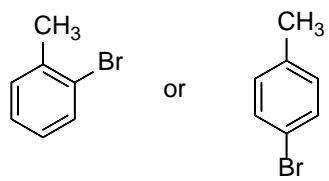


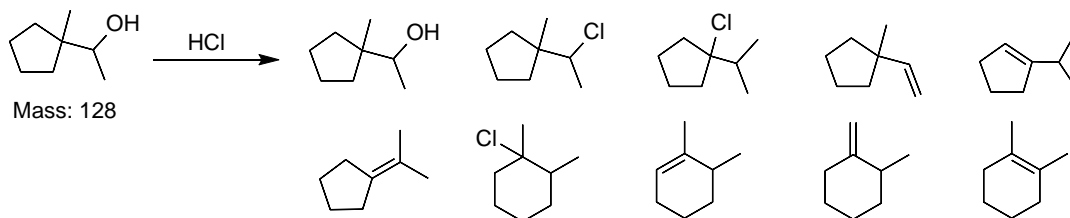
1. (10 points) Which compound is most likely to give rise to this ^{13}C NMR spectrum?





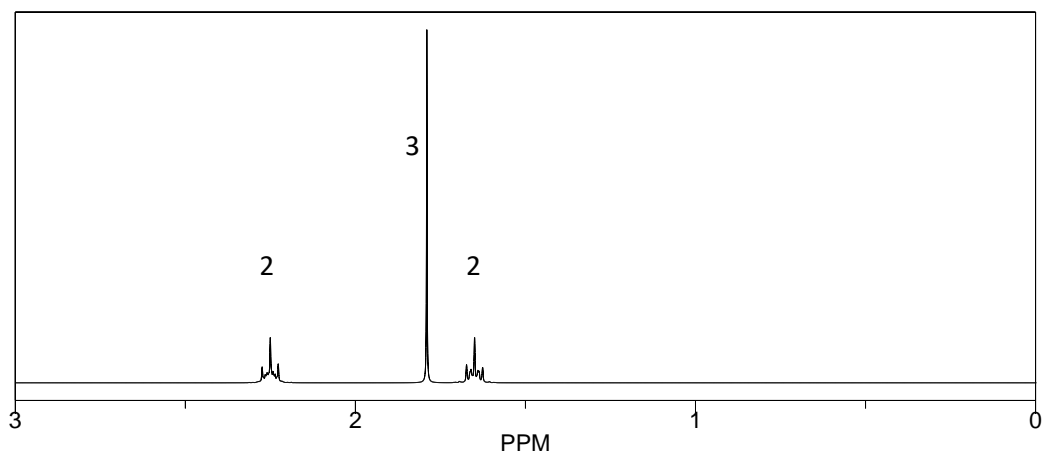


BONUS QUESTION (10 points): A student treats the alcohol below with HCl. This reaction provided two of the possible 10 products shown below.

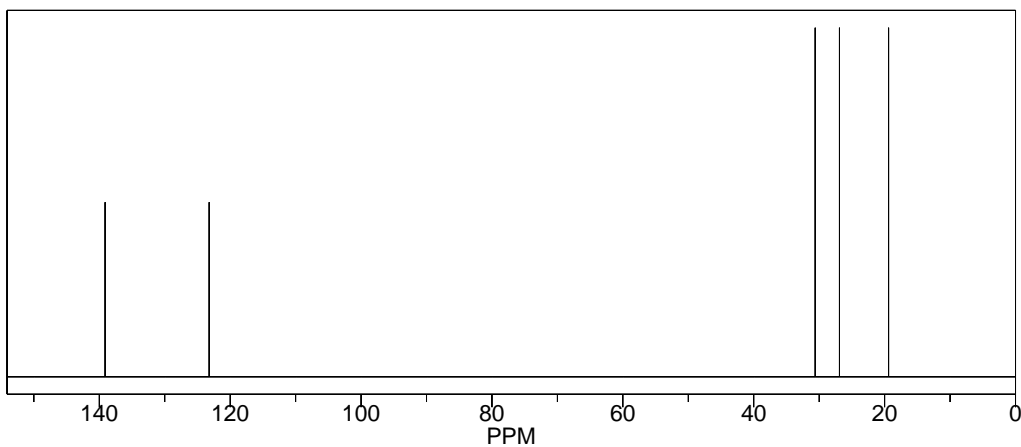


Which structure corresponds to the data below?

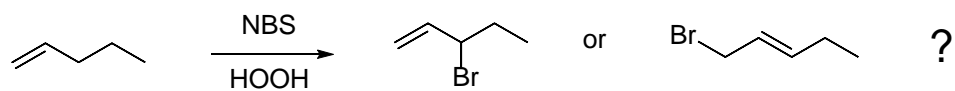
¹H NMR



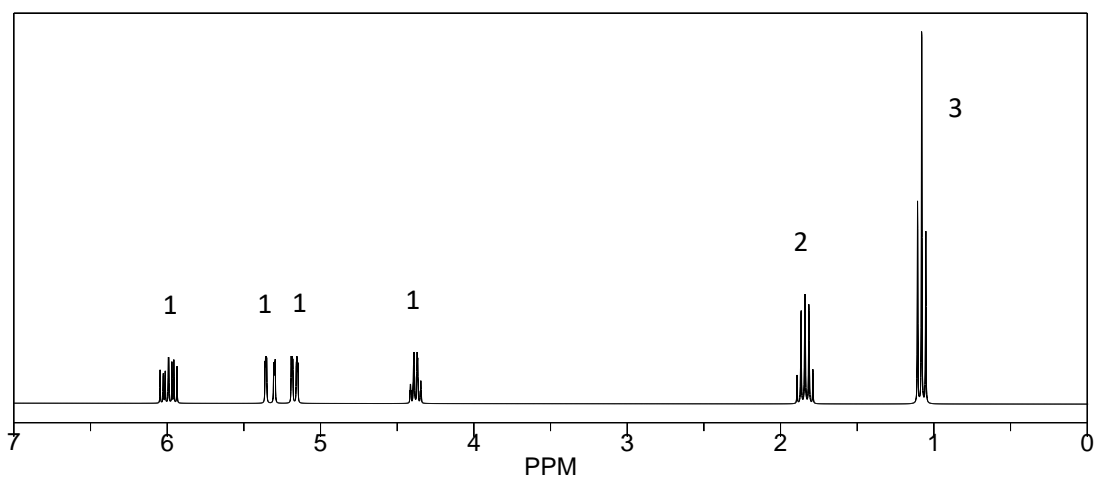
¹³C NMR



Chapter 14 type problems:



^1H NMR



^{13}C NMR

