

Organic Chemistry II

CONTENT

GRADEBOOK

STUDENTS

Join Code: 738695

**Private**

Students have no access

Assign

Present

Miscellaneous

Copy URL Edit Delete

Quiz 3 July 29, 2020 correct

Contains 9 items • Worth 25 points [Adjust Points](#)

Exported for Benjamin Appiagyei on Mon, 03 Aug 2020 21:35:13 GMT

Quiz 3

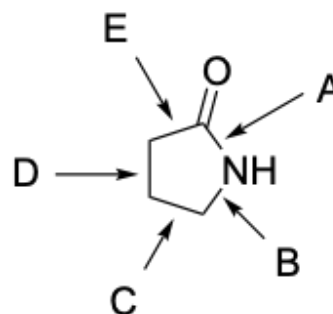
25 pts. 20 mins



Question 1

[Hide Correct Answer](#)[Show Responses](#)

Which of the bonds indicated below is an amide bond?



A	A	✓
B	B	
C	C	
D	D	

E

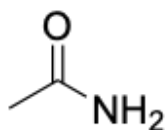
E



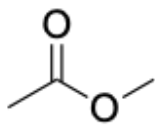
Question 2

[Hide Correct Answer](#)[Show Responses](#)

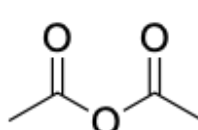
Arrange the following compounds in order of decreasing reactivity as electrophiles. From the most reactive to the least reactive.



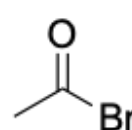
A



B



C



D

A

D > C > B > A

B

D > B > C > A



C

A > B > C > D

D

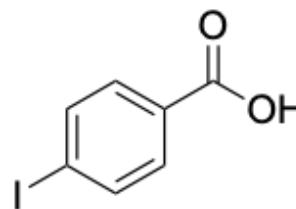
D > A > C > B



Question 3

[Hide Correct Answer](#)[Show Responses](#)

What is the name of the compound below?



A

4-iodophenolic acid

B

4-iodobenzoic acid



C

4-iodobenzene acid

D

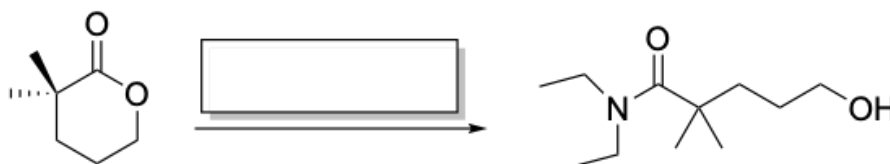
4-iodobenzaldehyde



Question 4

[Hide Correct Answer](#)
[Show Responses](#)

Which reagent is used in the reaction below?

A. $(\text{CH}_3)_2\text{NH} / \text{H}^+$ B. $(\text{CH}_3)\text{NH}_2 / \text{H}^+$ C. $(\text{CH}_3\text{CH}_2)_2\text{NH} / \text{H}^+$ D. NH_3 / H^+

A

A

B

B

C

C



D

D



Question 5

[Hide Correct Answer](#)
[Show Responses](#)

Which reagent is required for the reaction below?

A. 1. Excess DIBAL
2. H^+ , H_2O B. 1. Excess MeMgBr
2. H^+ , H_2O C. 1. Excess LiAlH_4
2. H^+ , H_2O E. 1. $(\text{CH}_3)_2\text{CuLi}$
2. H^+ , H_2O

A	A
B	B
C	C
D	D
E	E

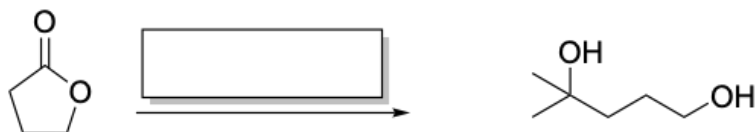


Question 6

[Hide Correct Answer](#)

[Show Responses](#)

Which reagent is required for the reaction below?



A. 1. Excess DIBAL
2. H^+ , H_2O

B. 1. Excess MeMgBr
2. H^+ , H_2O

C. 1. Excess LiAlH_4
2. H^+ , H_2O

E. 1. $(\text{CH}_3)_2\text{CuLi}$
2. H^+ , H_2O

A	A
B	B
C	C
D	D
E	E

Question 7

Hide Correct Answer Show Responses

Which reagent is required for the reaction below?



A. 1. Excess DIBAL
2. H^+ , H_2O

B. 1. Excess MeMgBr
2. H^+ , H_2O

C. 1. Excess LiAlH_4
2. H^+ , H_2O

E. 1. $(\text{CH}_3)_2\text{CuLi}$
2. H^+ , H_2O

A A

B B

C C



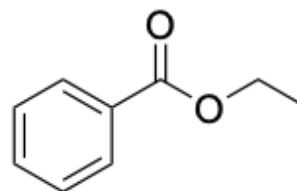
D D

E E

Question 8

Hide Correct Answer Show Responses

What is the name of the compound below?



A ethyl benzoate



B benzyl ethanoate

C phenyl ethanoate

D ethyl phenyl ester

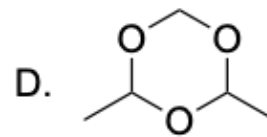
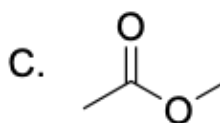
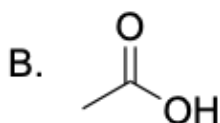
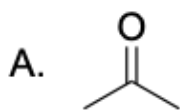
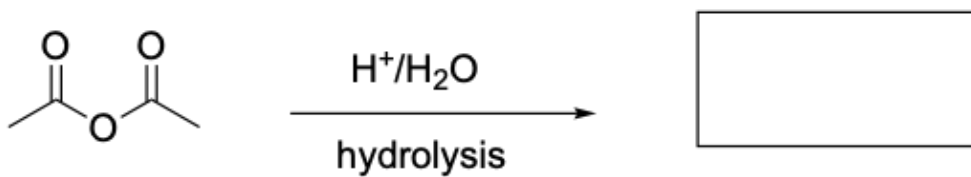


Question 9

[Hide Correct Answer](#)

[Show Responses](#)

What is the product of the hydrolysis reaction below?



A A

B B 

C C

D D

Enter your text here...

