

25 Points

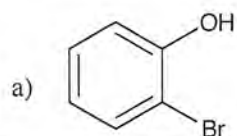
CEM143, Quiz 3, Summer 2019

NAME

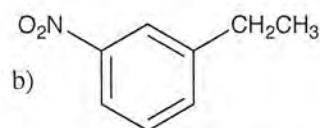
Key

PID

1) (4 Pts) Name the following aromatic compounds.

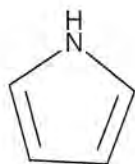


ortho-bromophenol



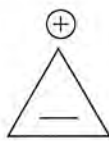
meta-nitroethylbenzene  
or meta-ethylnitrobenzene

2) (5 Pts) Label the following compounds as Aromatic (A), or Not Aromatic.



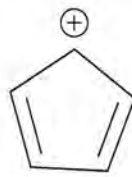
A

A



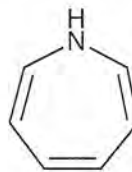
A

B



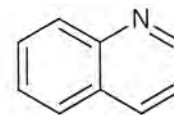
NA

C



NA

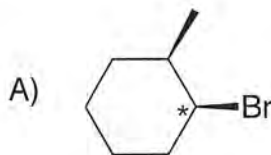
D



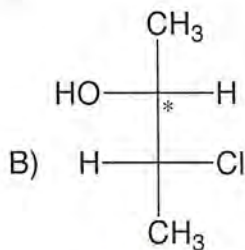
A

E

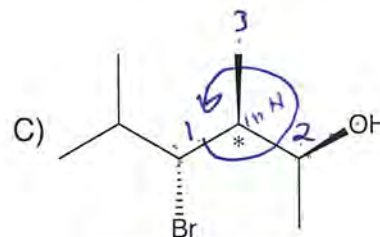
3) (3 Pts) Assign R/S-configuration to the stereogenic centers designated by a "\*".



S

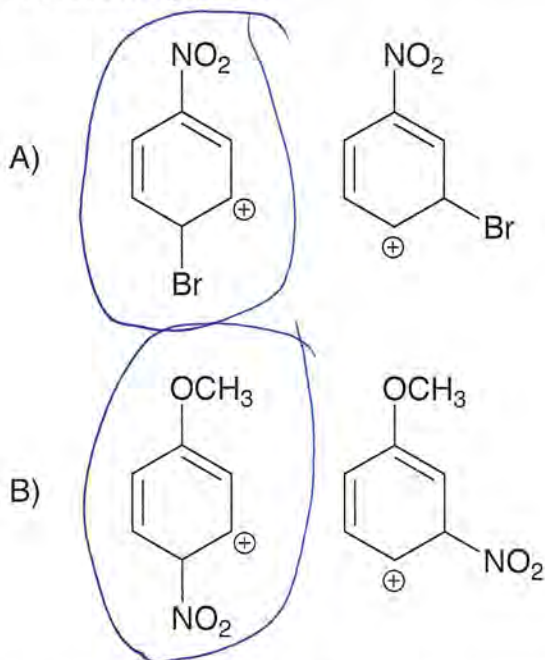


R

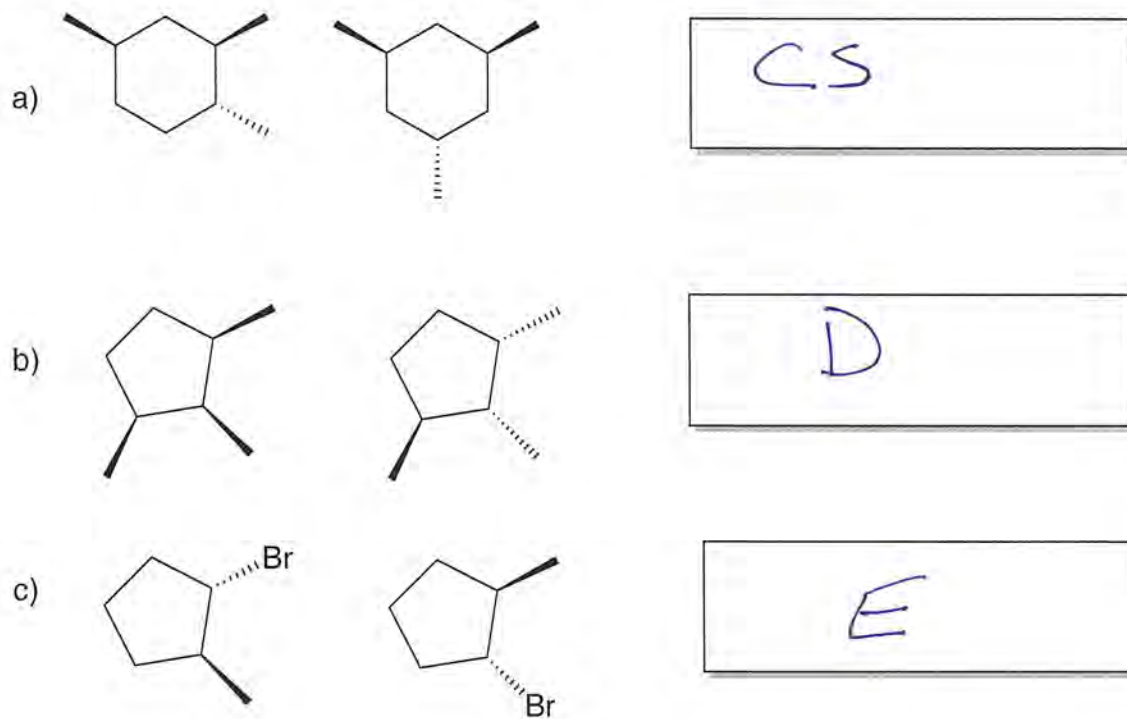


S R

4. (4 Points, 2 each) Place a circle around the more stable carbocation in each of the following pairs.



5. (6 Points, 2 each) Indicate the relationship of the following pairs as Enantiomers (E), Diastereomers (D), Identical (I), or Constitutional isomers (CS).



6. (5 pts) Provide an efficient synthesis of **Compound Z** starting with benzene and any other necessary reagents.

