

**(20 Points Total)**

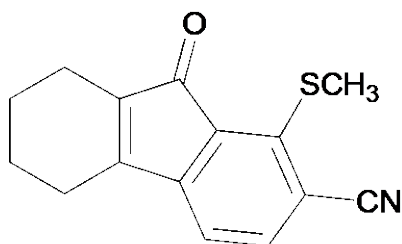
1. What is the valence of potassium (K)?

2 Pts

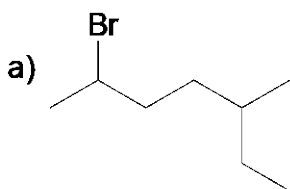
2. What is the valence of Gallium (Ga)?

2 Pts

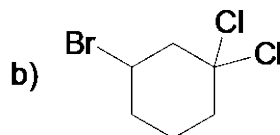
3. Which element in each pair is the more electronegative element?

a) As or Se  1 Ptb) Br or I  1 Pt4. Answer the following questions about **Molecule A**.**Molecule A**a) What is the hybridization of oxygen in **Molecule A**?  2 Ptsb) What is the hybridization of Sulfur in **Molecule A**?  2 Ptsc) What is the hybridization of Nitrogen in **Molecule A**?  2 Ptsd) How many  $\pi$ -electrons are there in **Molecule A**?  2 Pts

5. (6 Pts) Provide the IUPAC name for the following compounds.



3 Pts



3 Pts