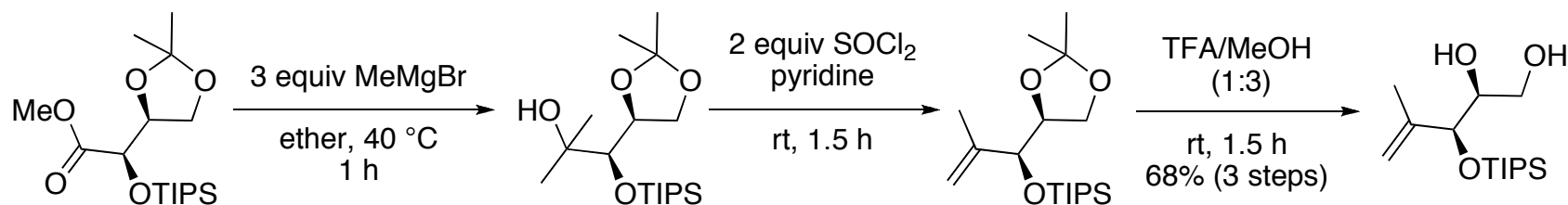
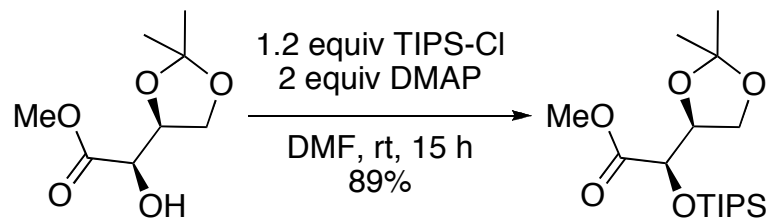
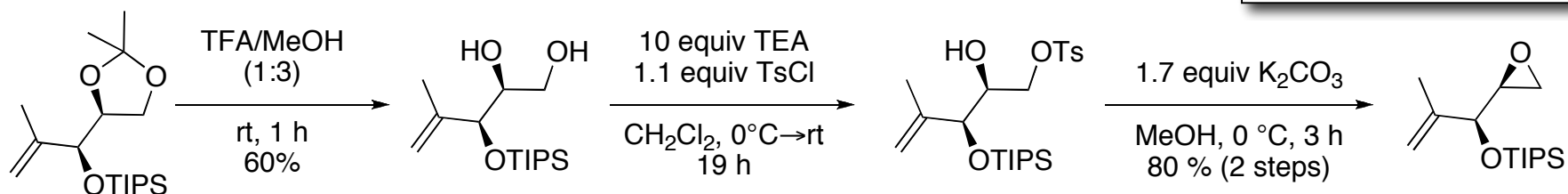
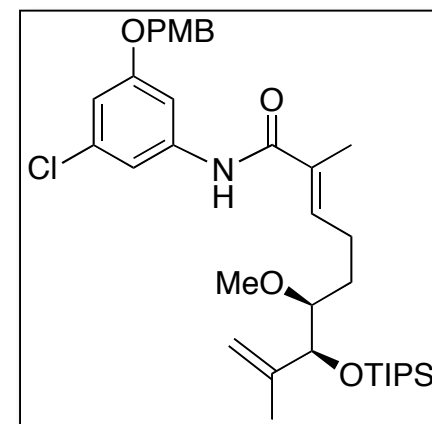
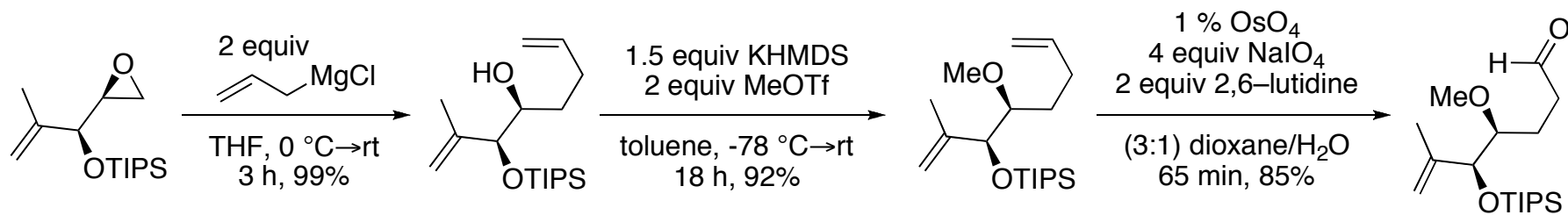
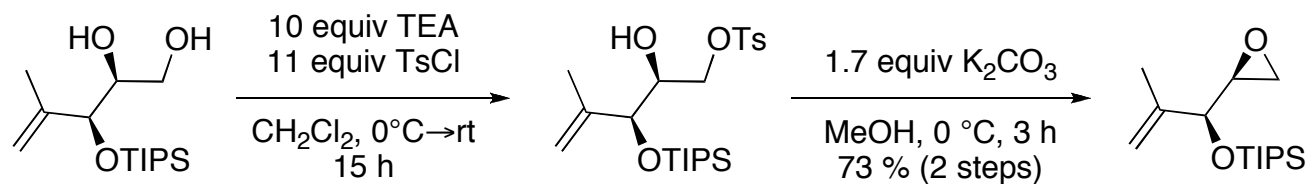
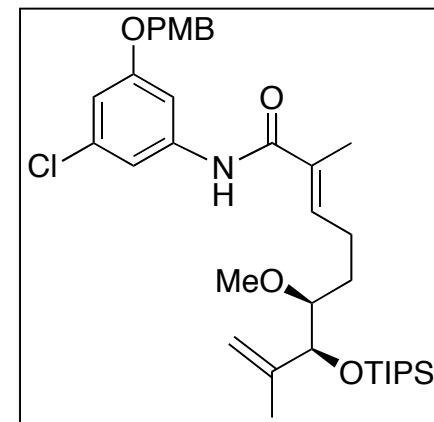


Group Meeting 06/29/09
Monica Norberg

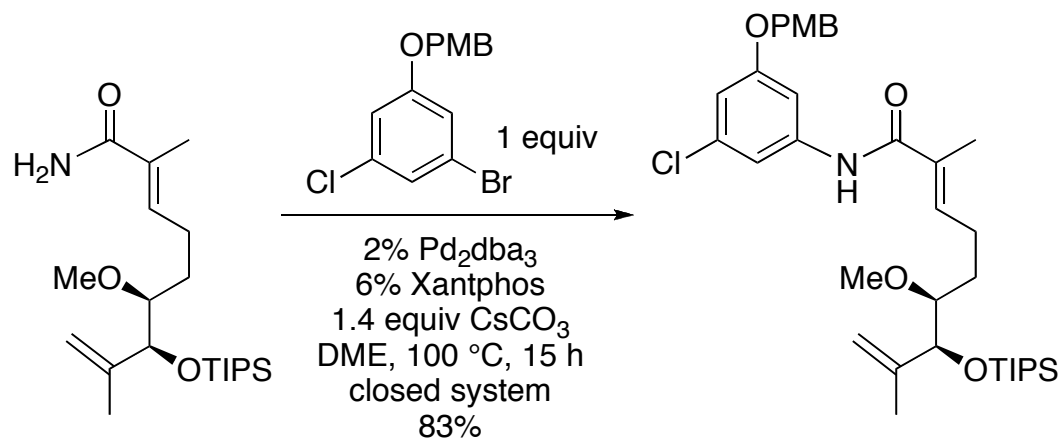
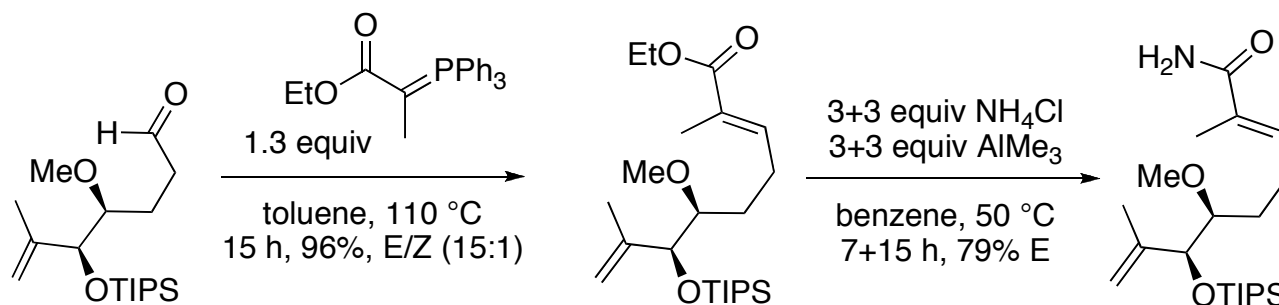
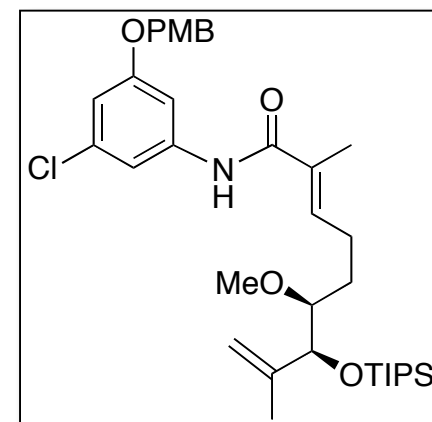
Starting Material



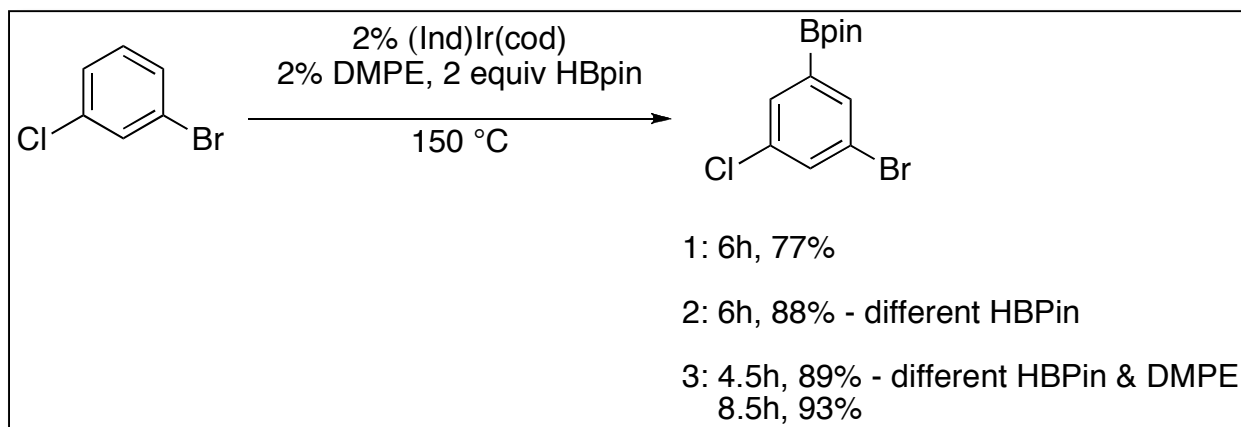
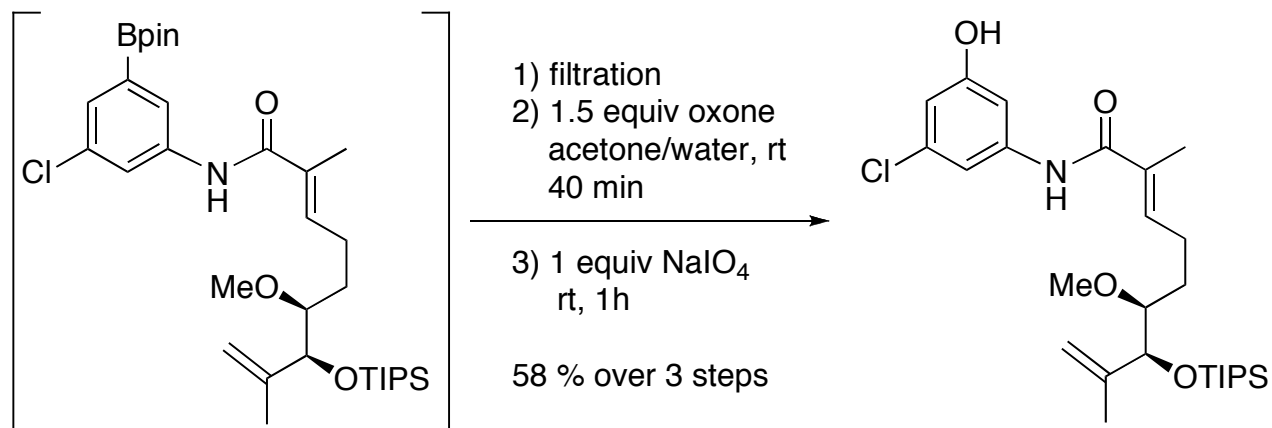
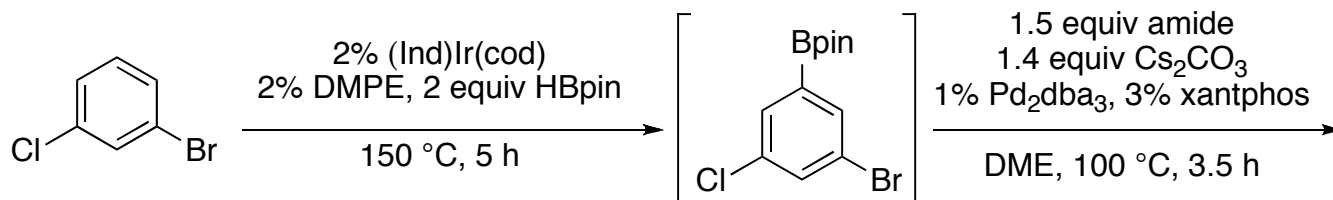
Starting Material



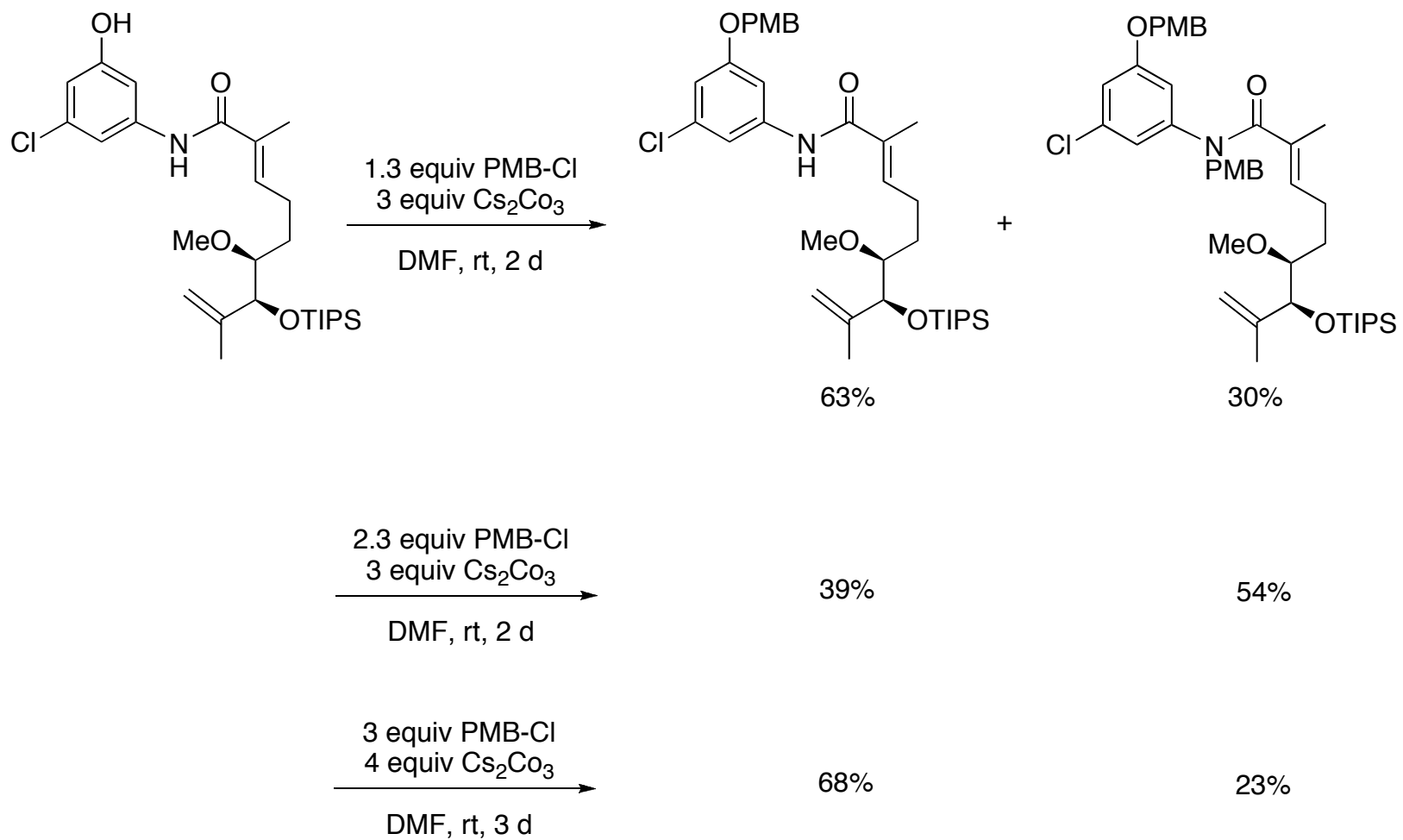
Starting Material



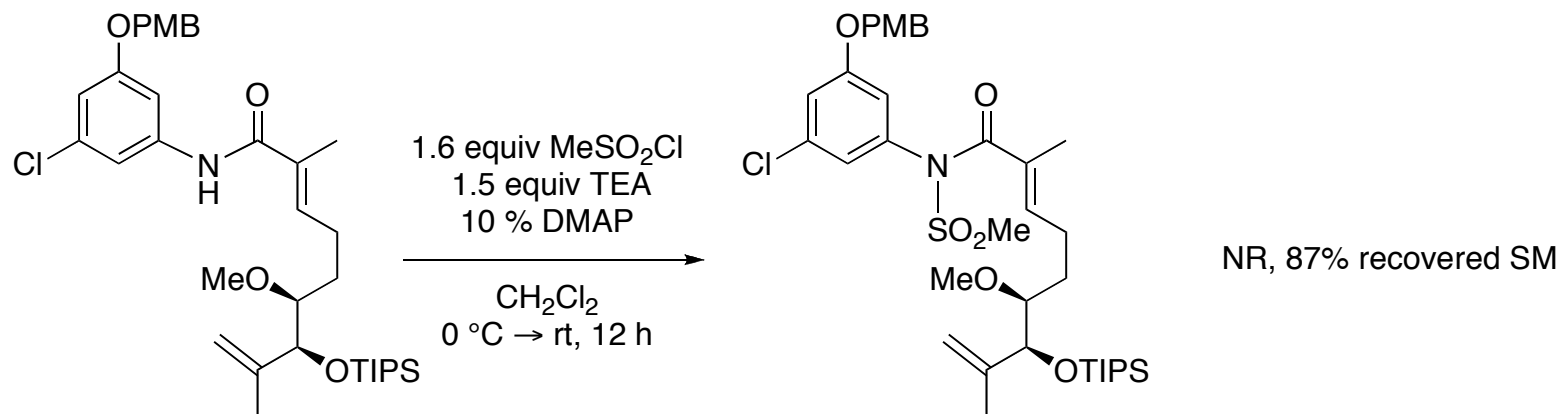
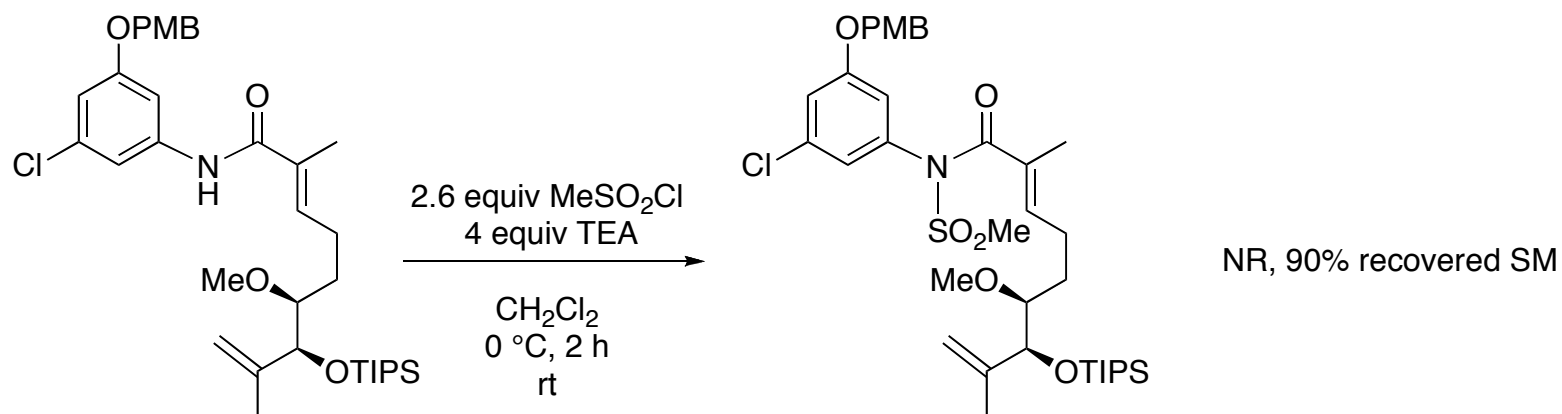
C-H Activation/Borylation/Amidation/Oxidation



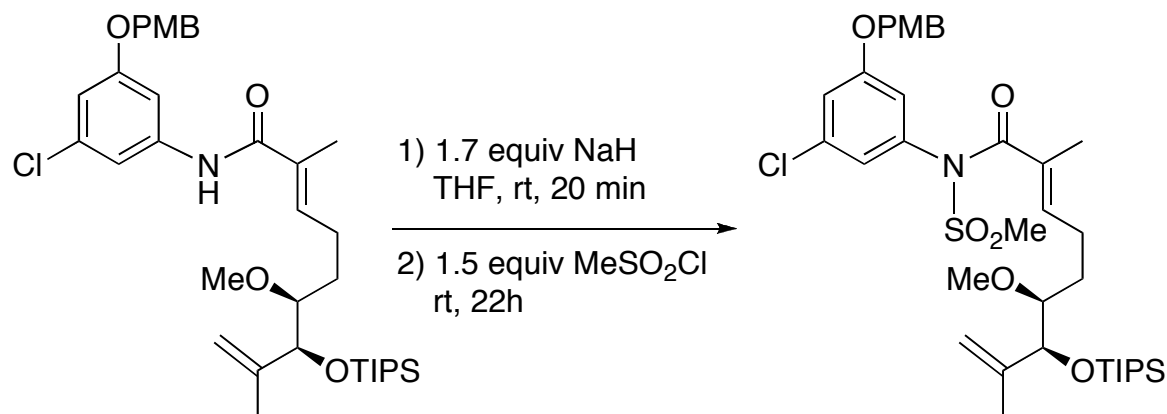
PMB Protection of Real System



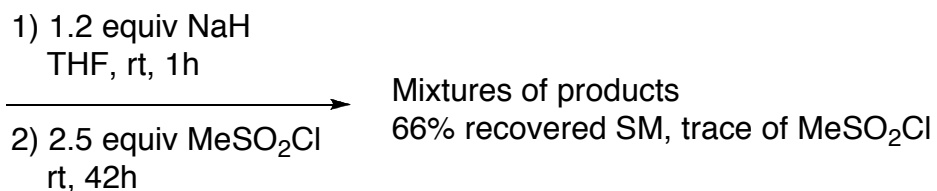
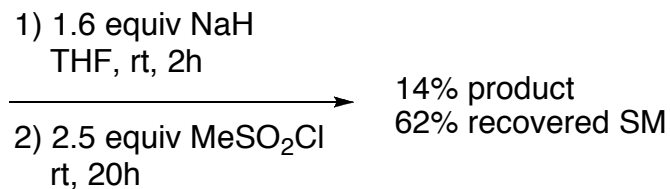
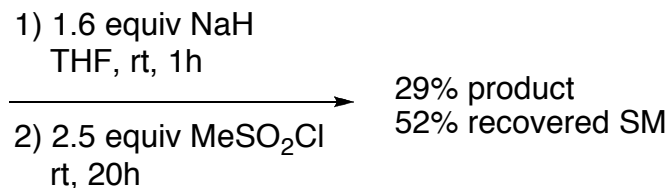
Preparation of Sulfonyl Amide — TEA as Base



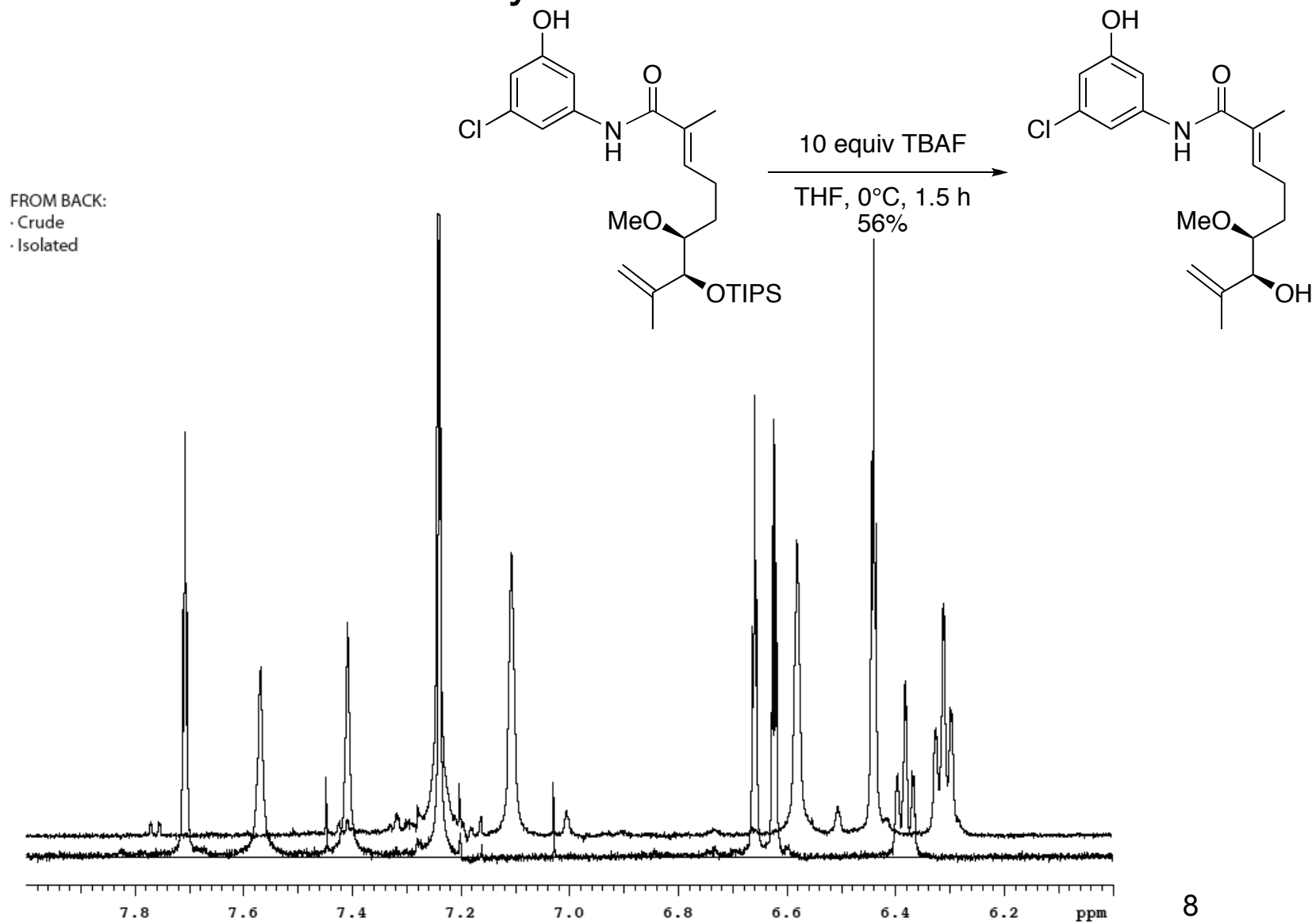
Preparation of Sulfonyl Amide — NaH as Base



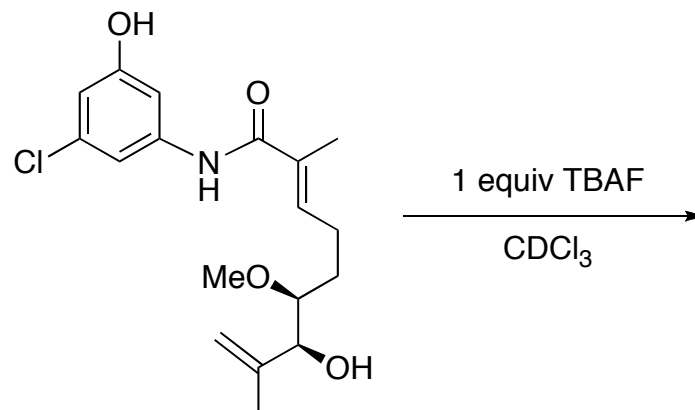
Trace of product by TLC
96% recovered SM



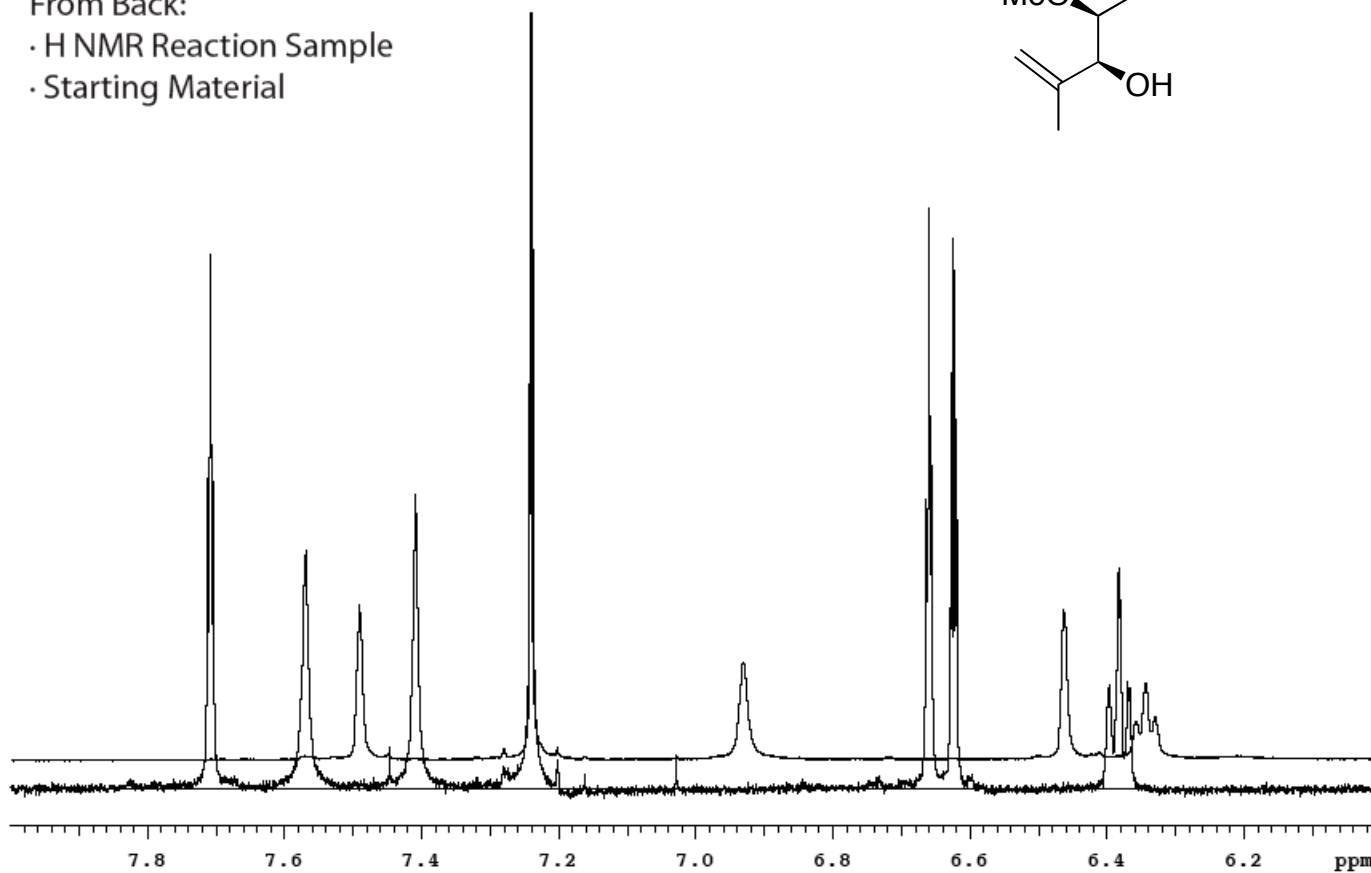
Chemical Shift — TBAF Study



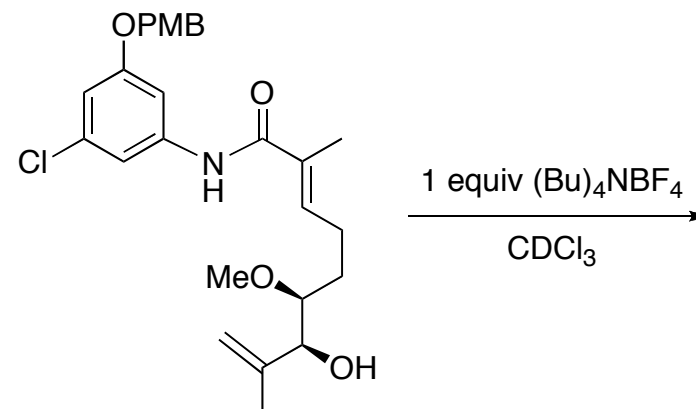
Chemical Shift — TBAF Study



From Back:
· H NMR Reaction Sample
· Starting Material

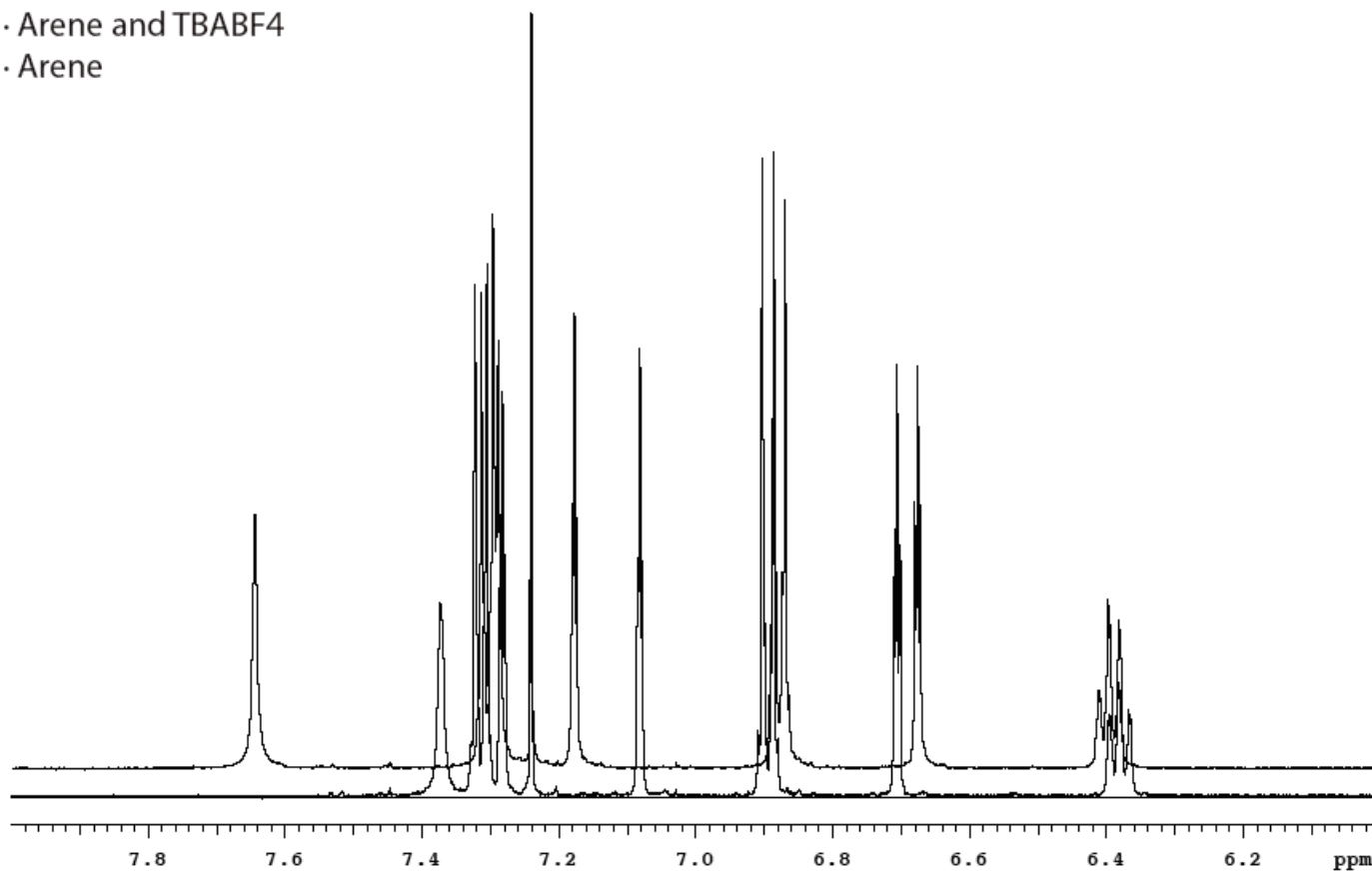


Chemical Shift — $(\text{Bu})_4\text{NBF}_4$

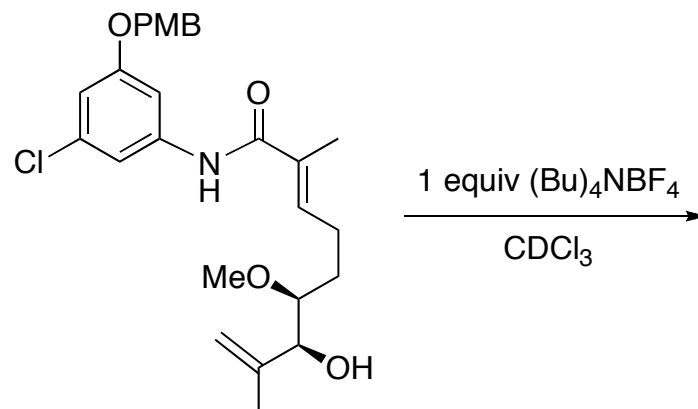


From Back:

- Arene and TBABF4
- Arene

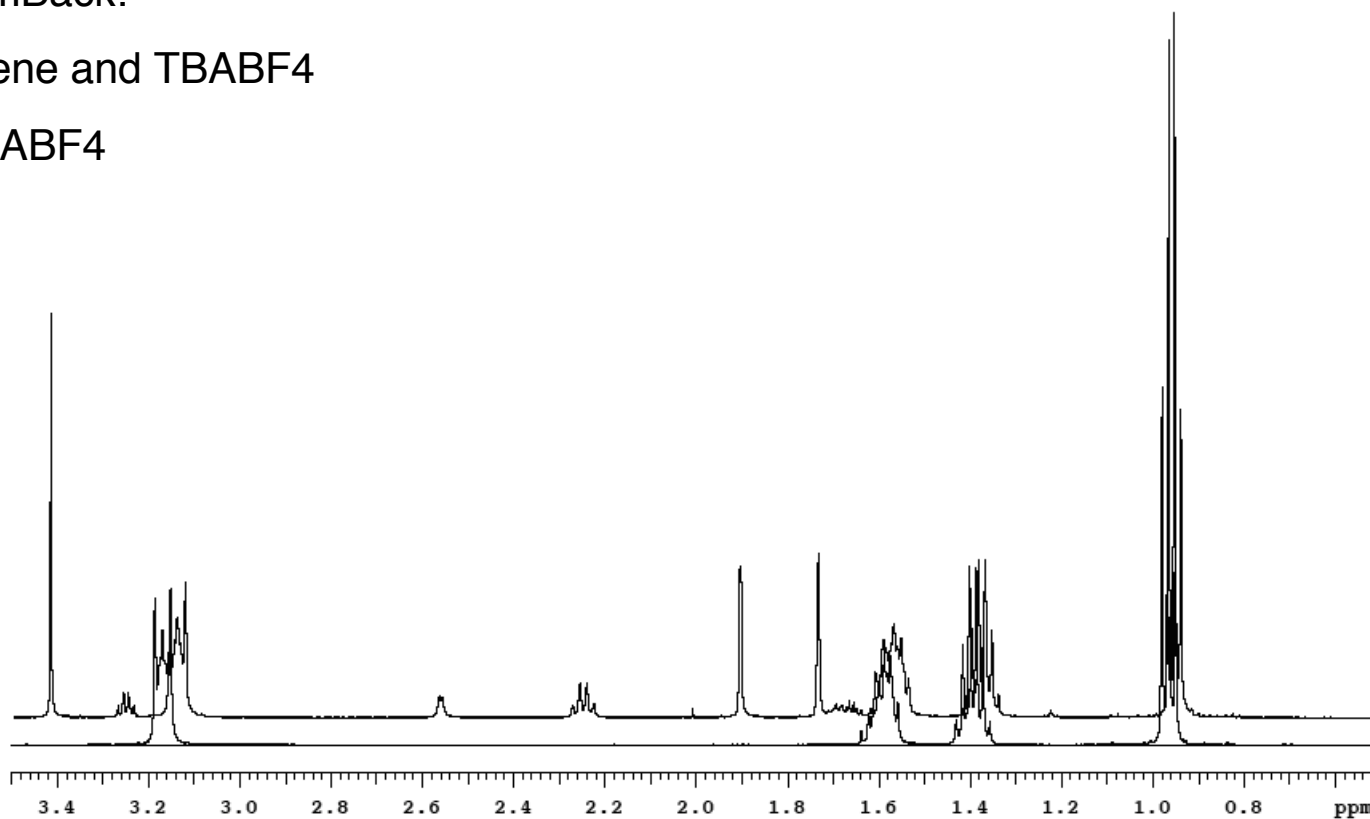


Chemical Shift — $(\text{Bu})_4\text{NBF}_4$

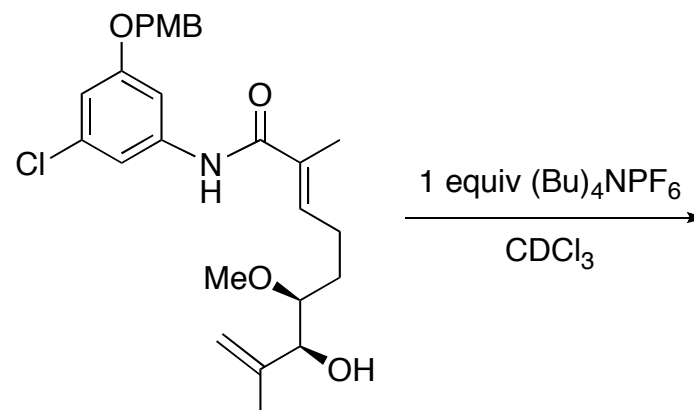


FromBack:

- Arene and TBABF₄
- TBABF₄

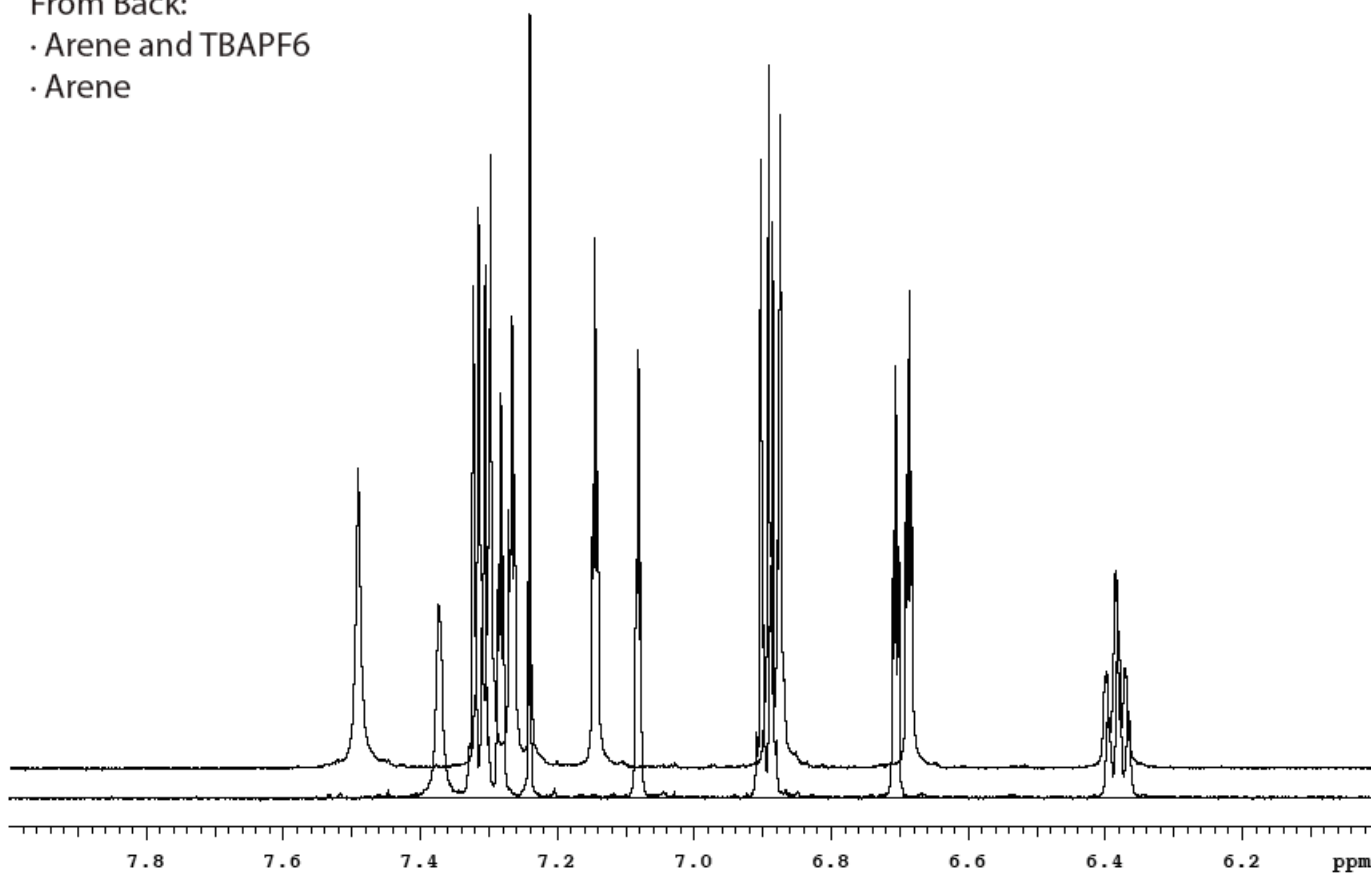


Chemical Shift — $(\text{Bu})_4\text{NPF}_6$

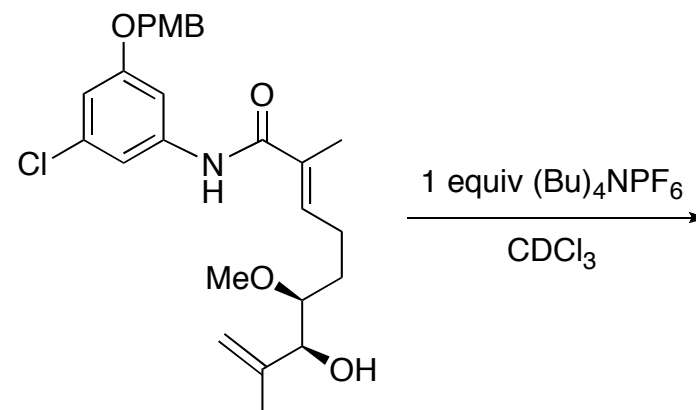


From Back:

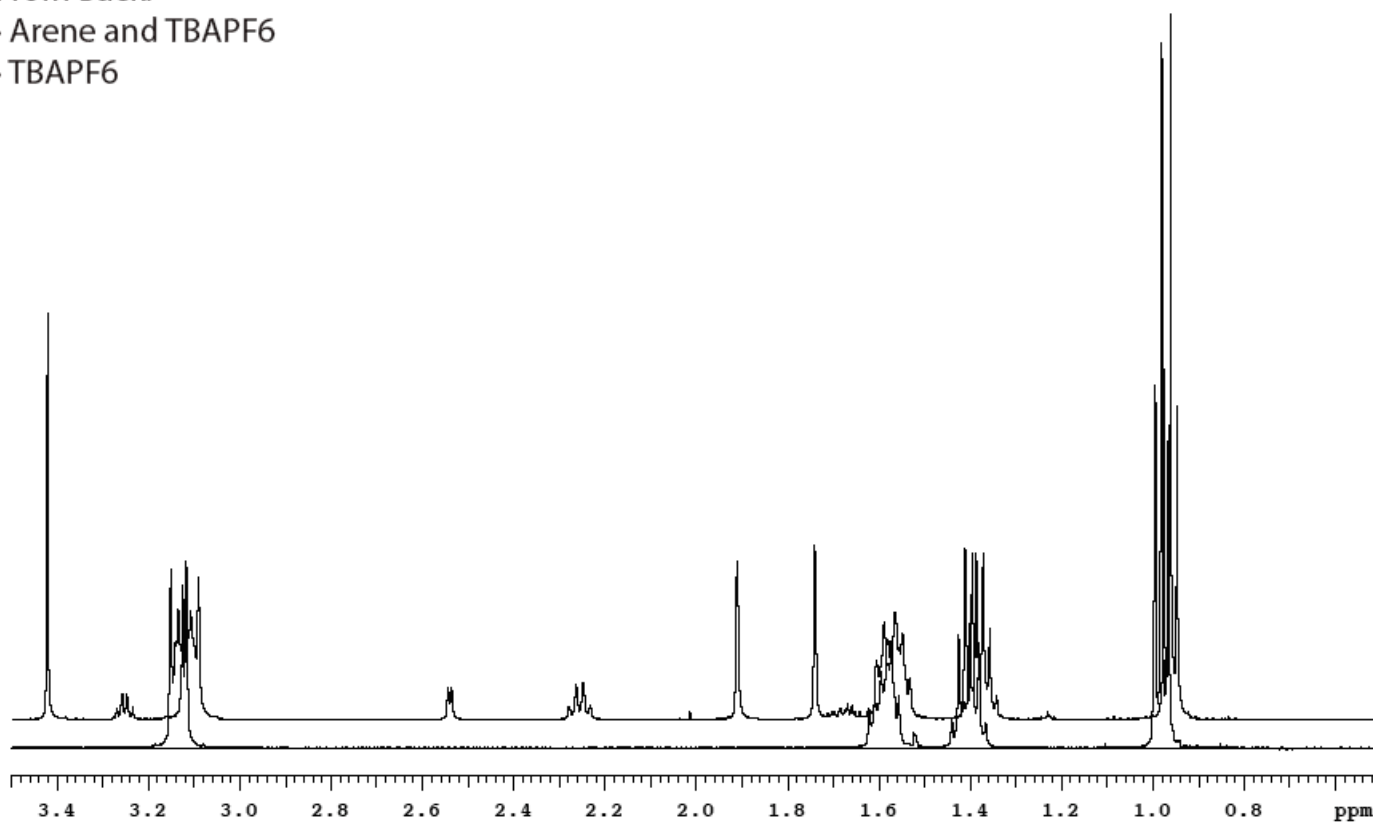
- Arene and TBAPF6
- Arene



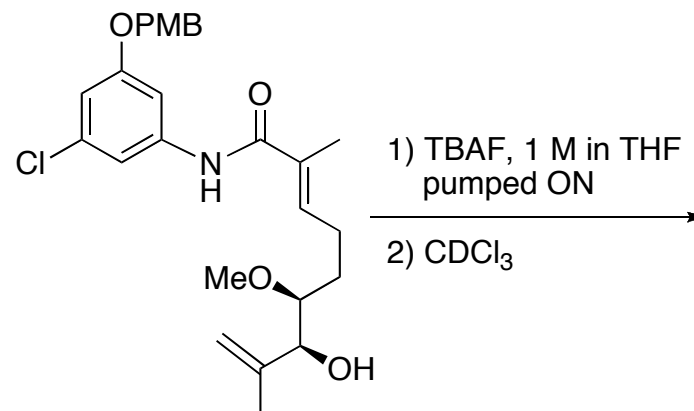
Chemical Shift — $(\text{Bu})_4\text{NPF}_6$



From Back:
· Arene and TBAPF6
· TBAPF6

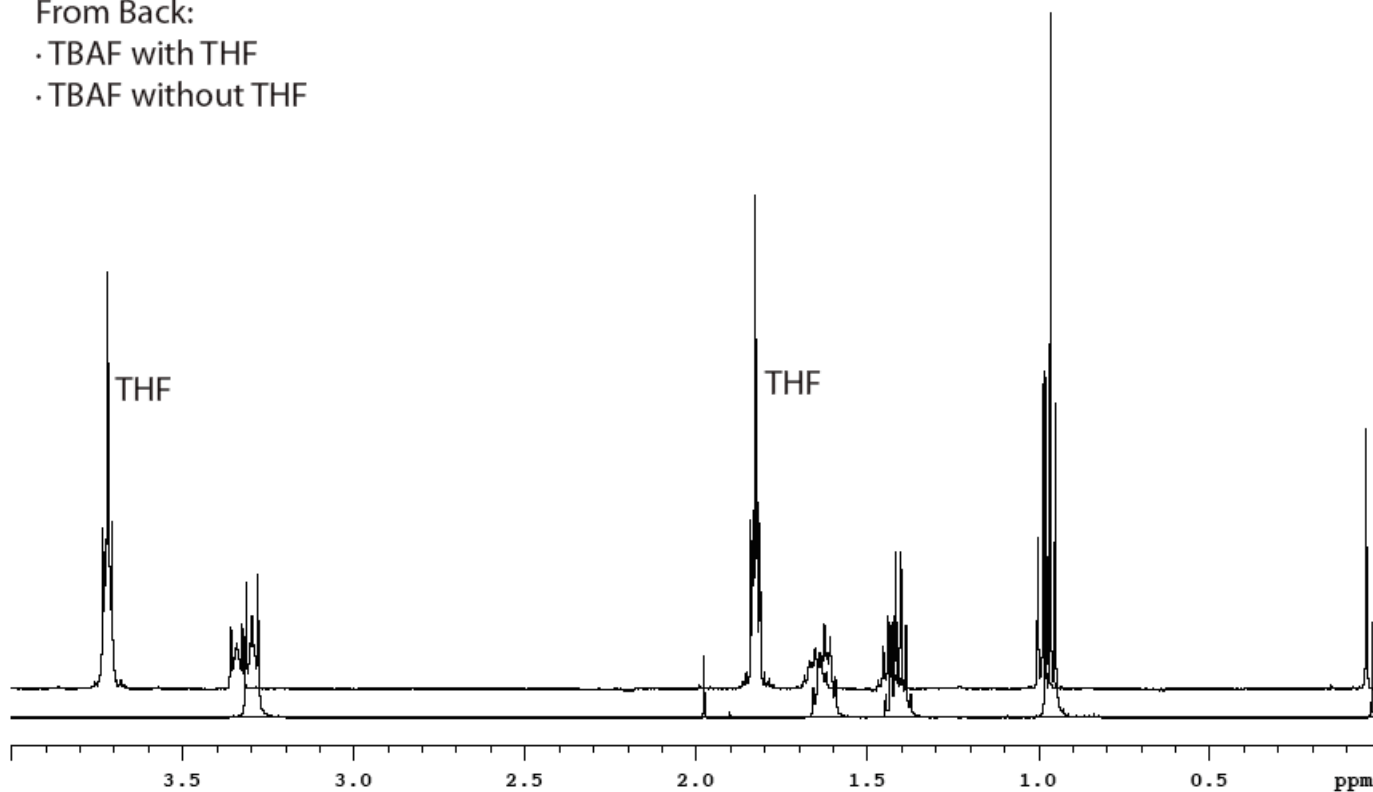


Chemical Shift — TBAF w/o THF

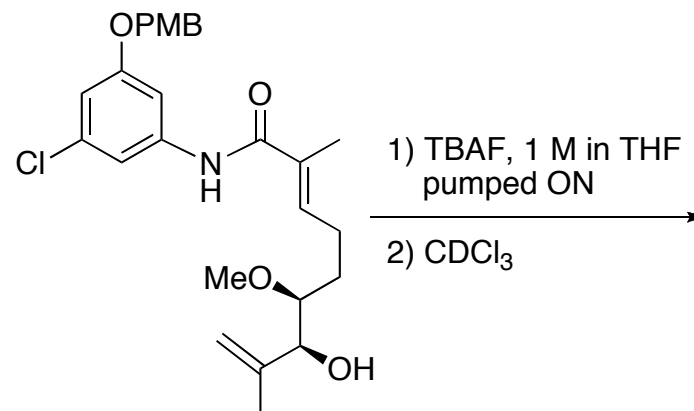


From Back:

- TBAF with THF
- TBAF without THF

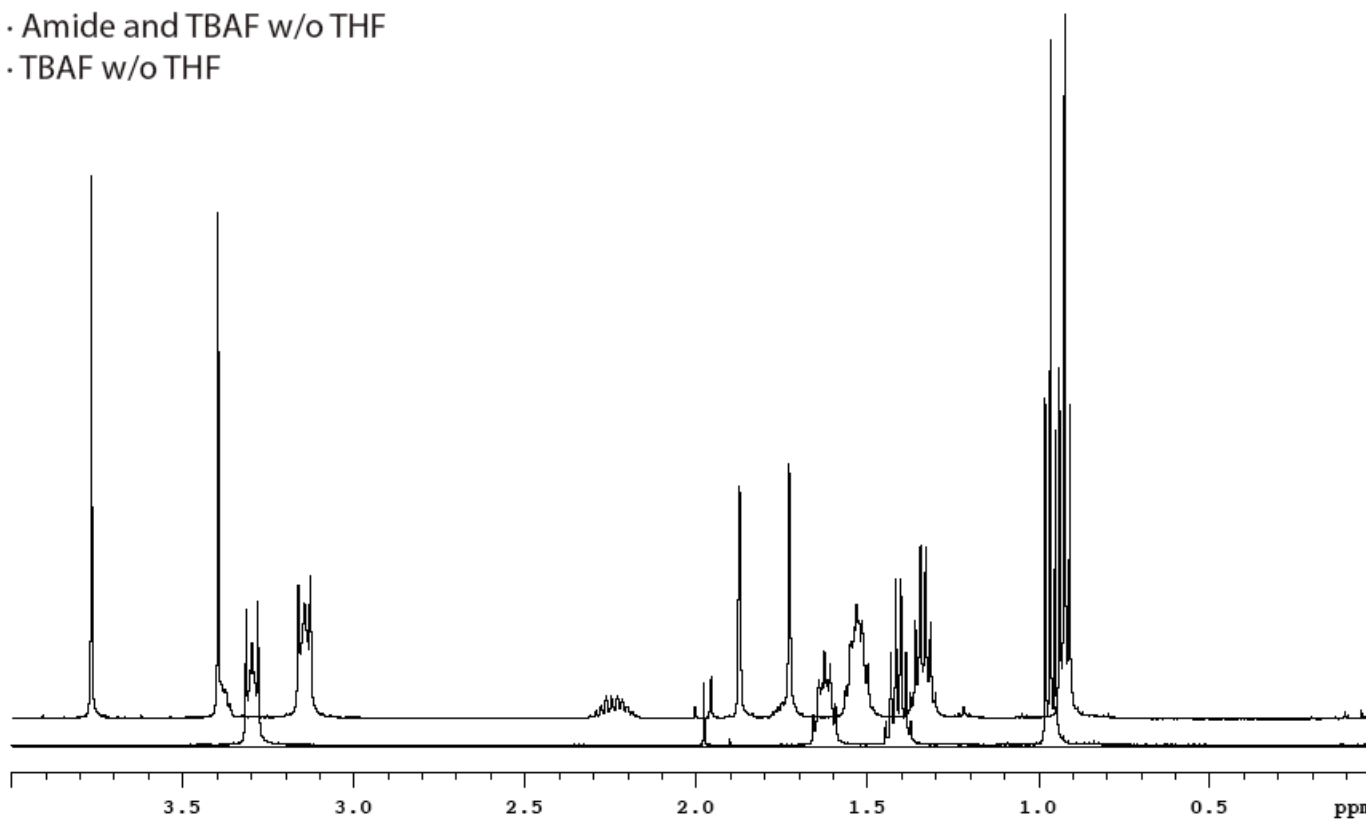


Chemical Shift — TBAF w/o THF

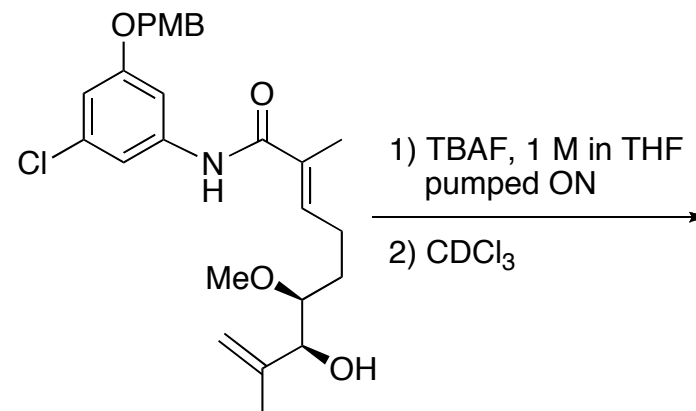


From Back:

- Amide and TBAF w/o THF
- TBAF w/o THF

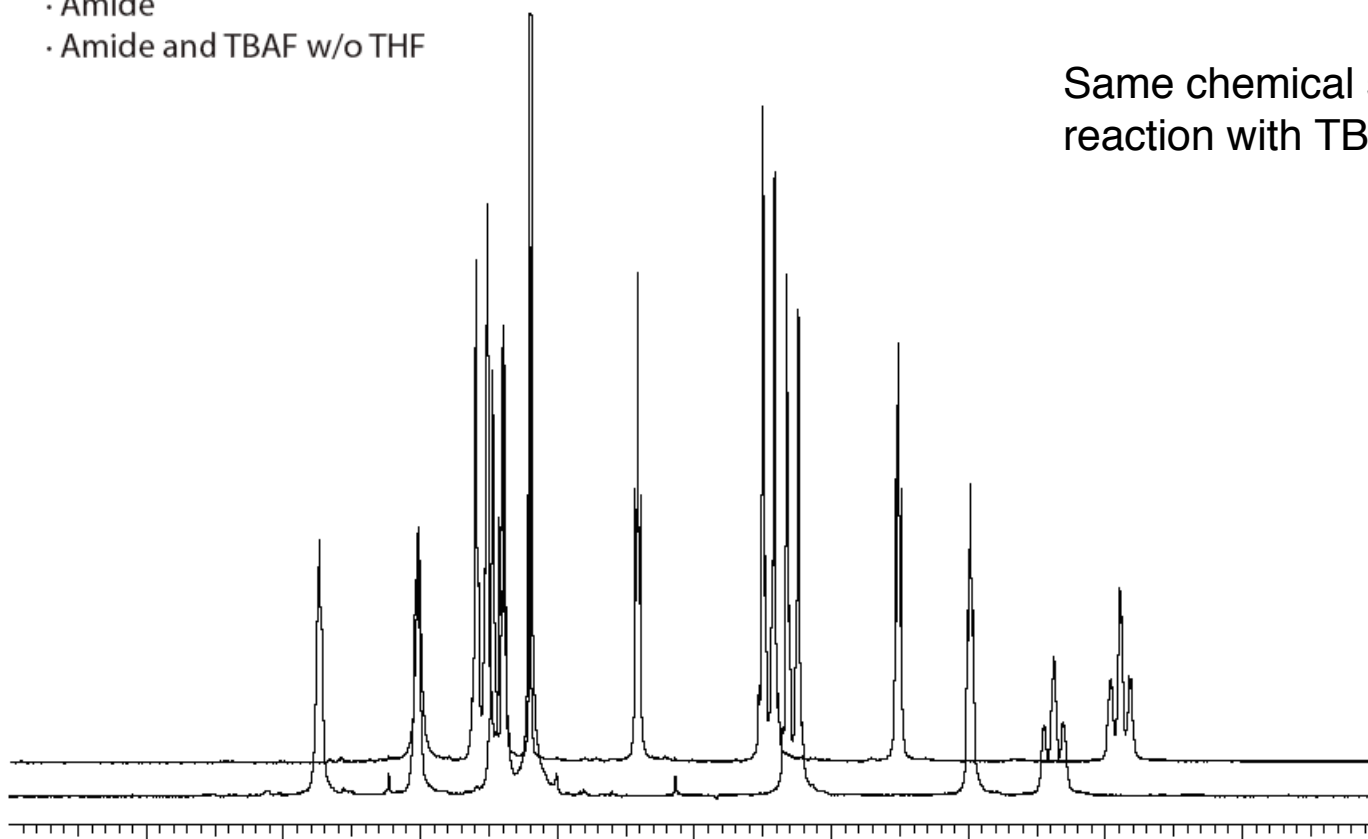


Chemical Shift — TBAF w/o THF



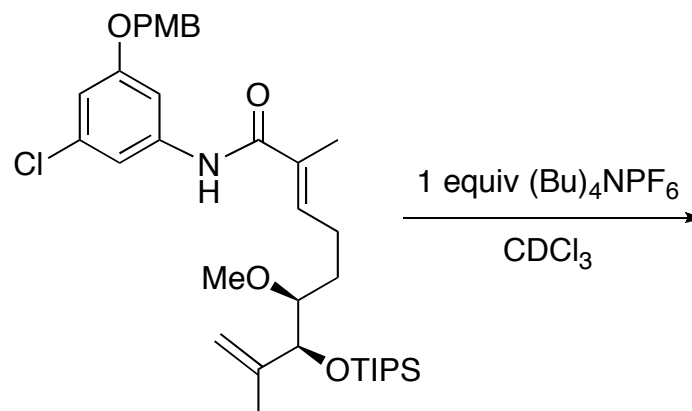
From Back:

- Amide
- Amide and TBAF w/o THF



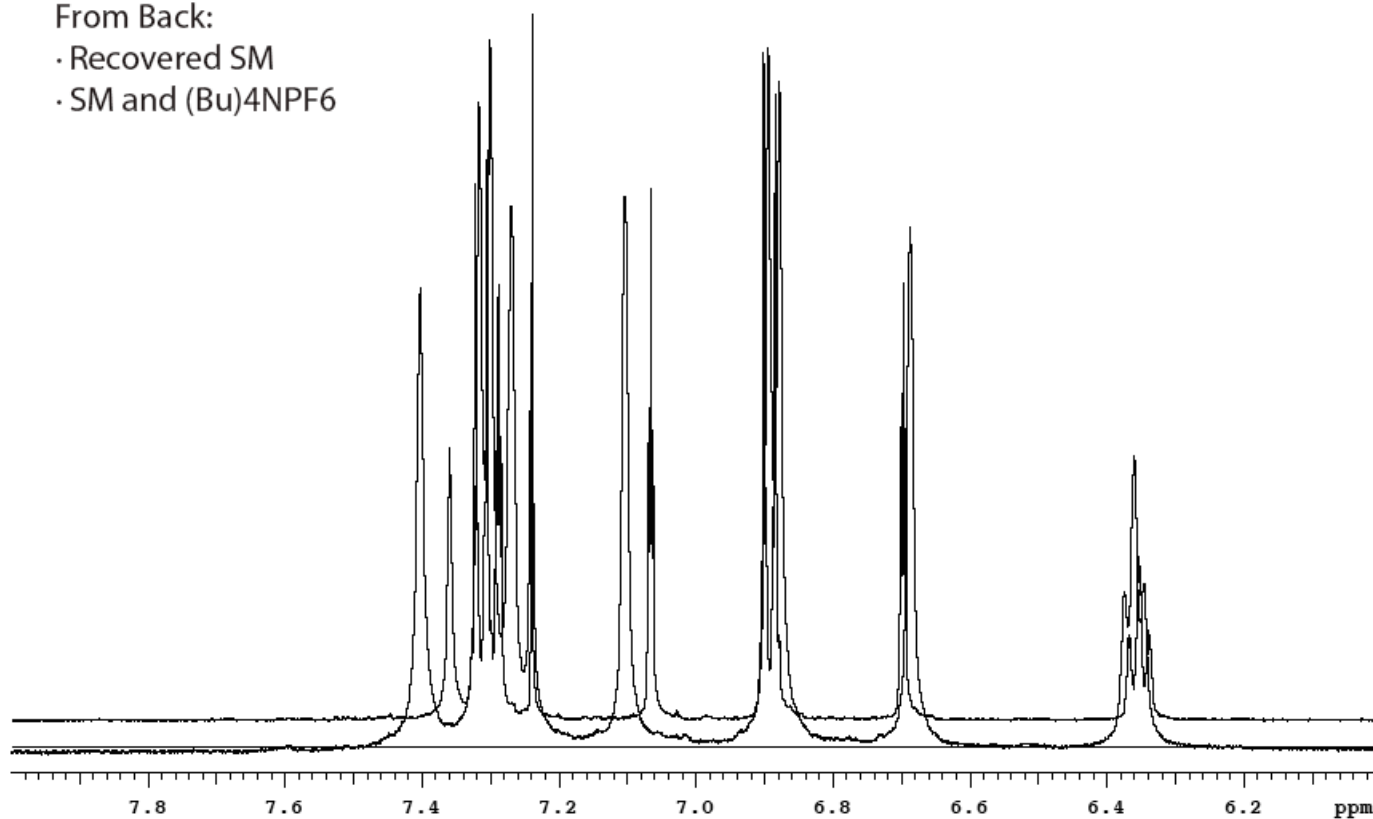
Same chemical shifts as for reaction with TBAF in FHF.

Chemical Shift – Unprotected alcohol with $(\text{Bu})_4\text{NPF}_6$

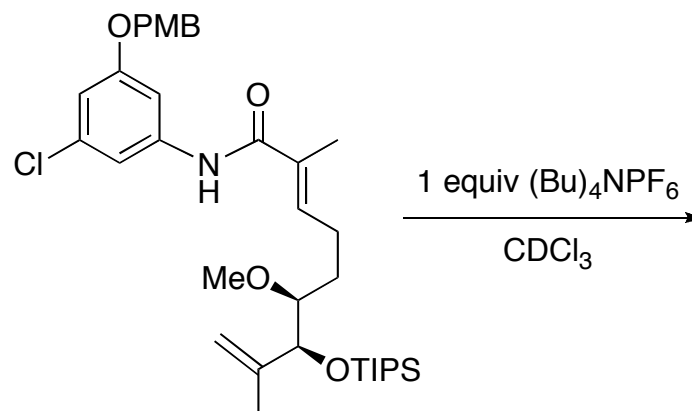


From Back:

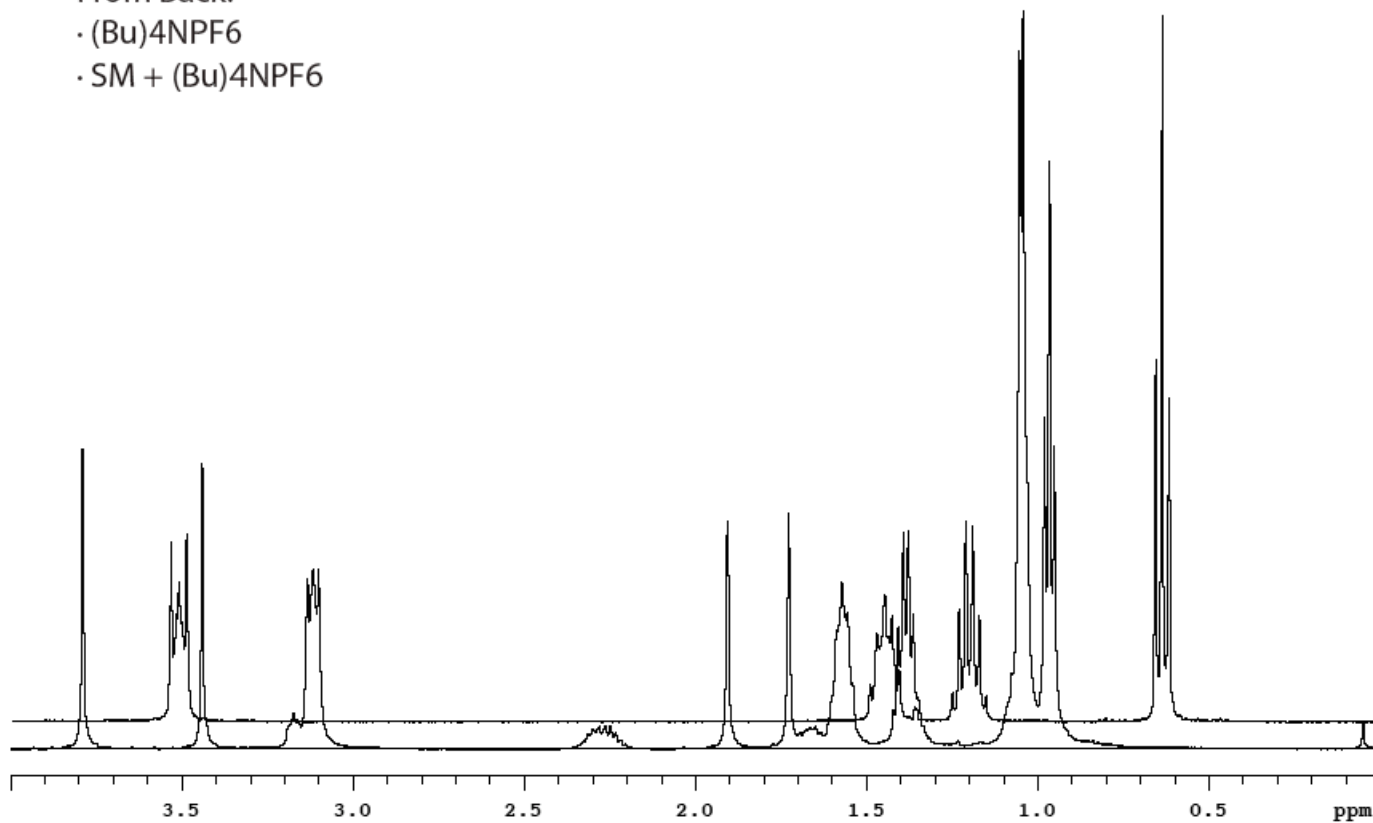
- Recovered SM
- SM and $(\text{Bu})_4\text{NPF}_6$



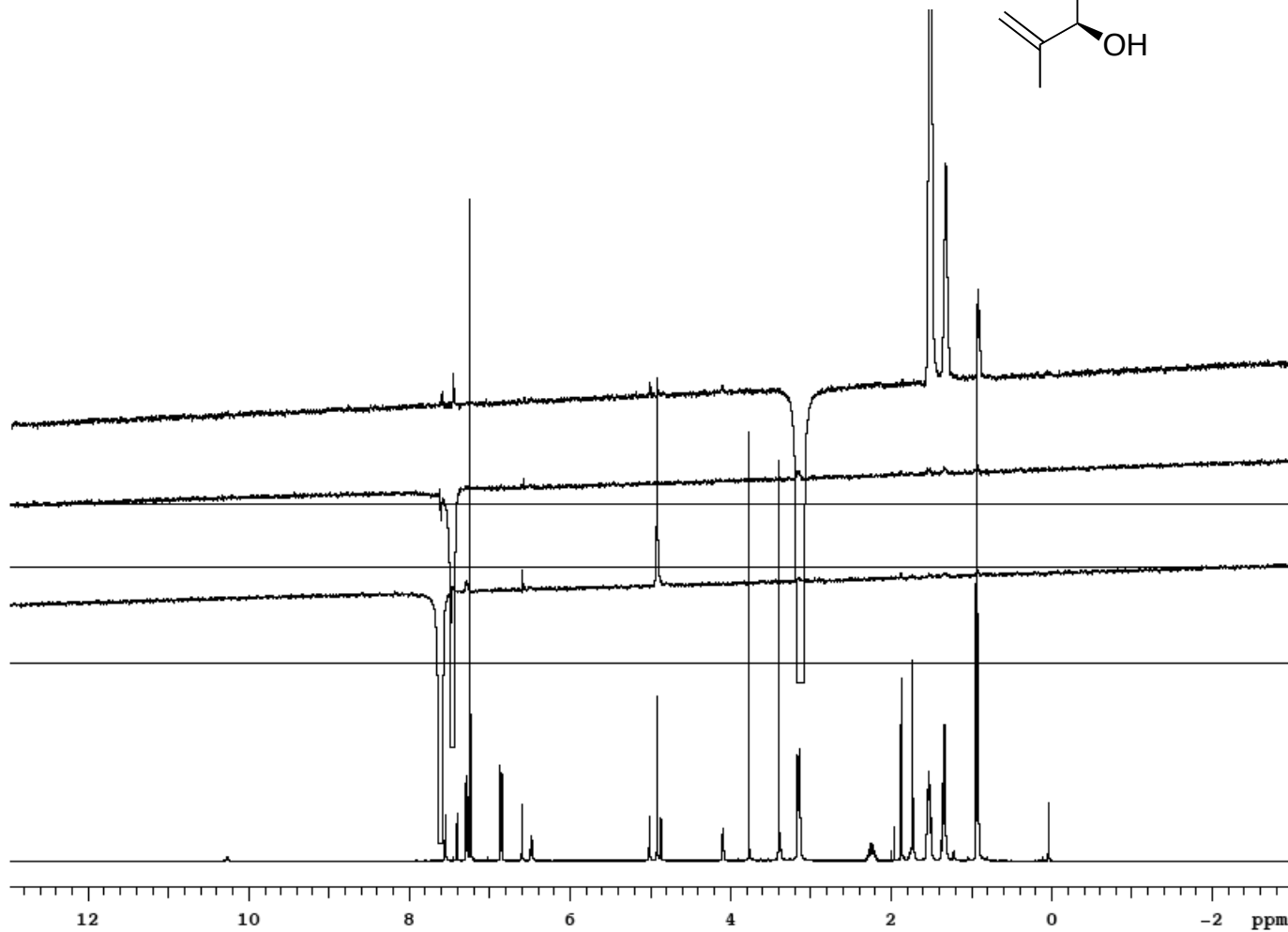
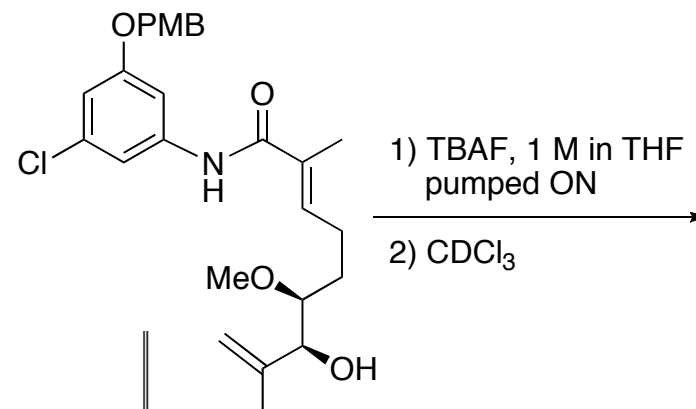
Chemical Shift — Unprotected alcohol with $(\text{Bu})_4\text{NPF}_6$



- From Back:
· $(\text{Bu})_4\text{NPF}_6$
· SM + $(\text{Bu})_4\text{NPF}_6$



NOE — TBAF w/o THF



NOE — $(\text{Bu})_4\text{NPF}_6$

