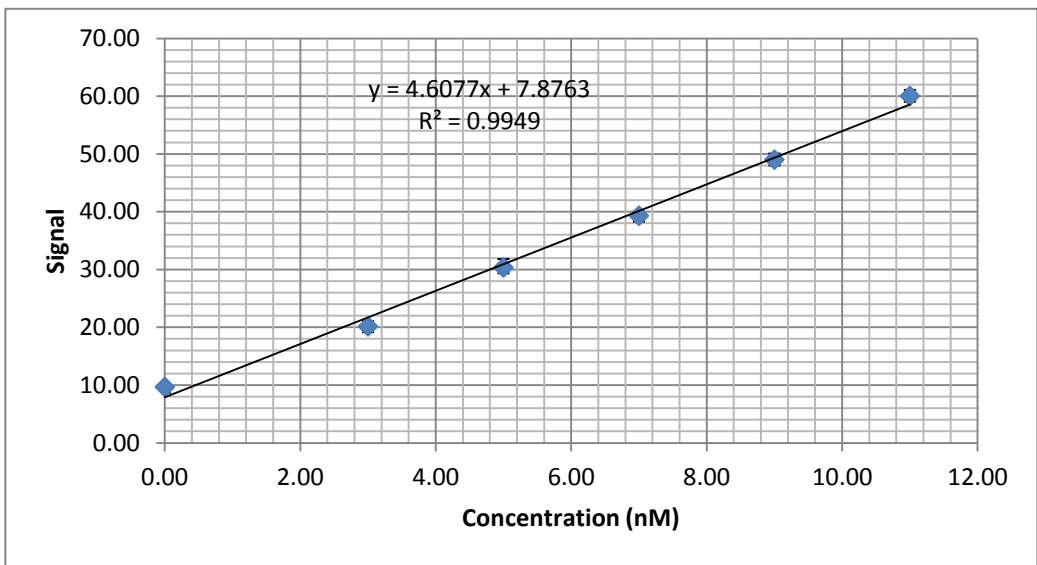


| Conc (nM) | Signal | | | Mean | Std Dev. | Conc (nM) | Mean |
|-----------|--------|-------|-------|-------|----------|-----------|-------|
| 0.00 | 10.00 | 9.75 | 9.25 | 9.67 | 0.312 | 0.00 | 9.67 |
| 3.00 | 20.00 | 21.32 | 19.15 | 20.16 | 0.893 | 3.00 | 20.16 |
| 5.00 | 30.00 | 32.3 | 28.75 | 30.35 | 1.470 | 5.00 | 30.35 |
| 7.00 | 40.00 | 39.65 | 38.26 | 39.30 | 0.751 | 7.00 | 39.30 |
| 9.00 | 50.00 | 47.55 | 49.5 | 49.02 | 1.057 | 9.00 | 49.02 |
| 11.00 | 60.00 | 61.35 | 58.75 | 60.03 | 1.062 | 11.00 | 60.03 |

Ymin 10.60 Ymin = Yblank + 3*s Yblank = mean
Ymin 12.78 Ymin = Yblank + 10*s
Cmin 0.20 S/N=3 Cmin = (Ymin-Yblank)/m
Cmin 0.68 S/N=10 Cmin = (Ymin-Yblank)/m



m =
sm =
R2 =

Std Dev.

0.31

0.89

1.47

0.75

1.06

1.06

4.61 7.88 **b =**

0.17 1.14 **sb =**

0.99 1.49 **sy =**