

# Quiz 1-25 points

Enter your test instructions here...



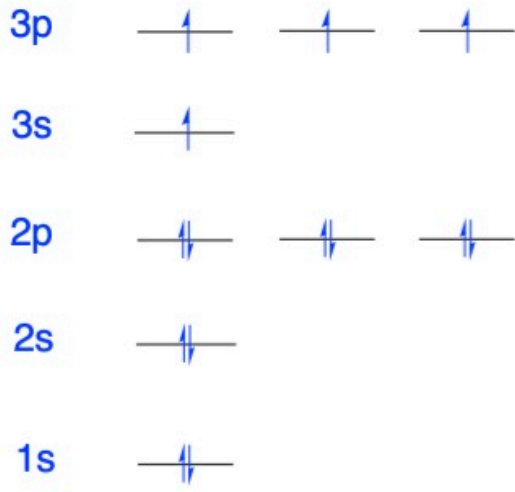
**Question1**

[Show Correct Answer](#)

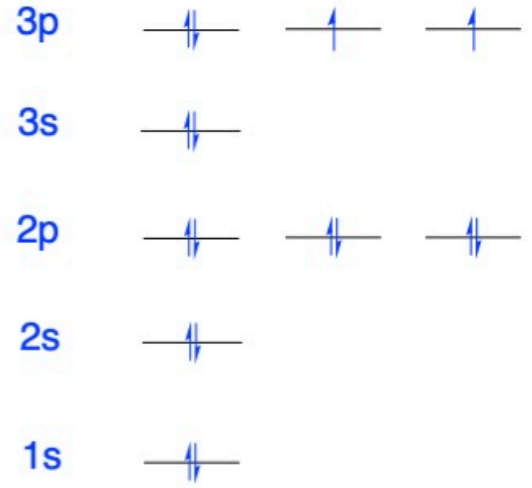
[Show Responses](#)

(3 points) Choose the correct electron configuration for sulfur (S — 16 electrons).

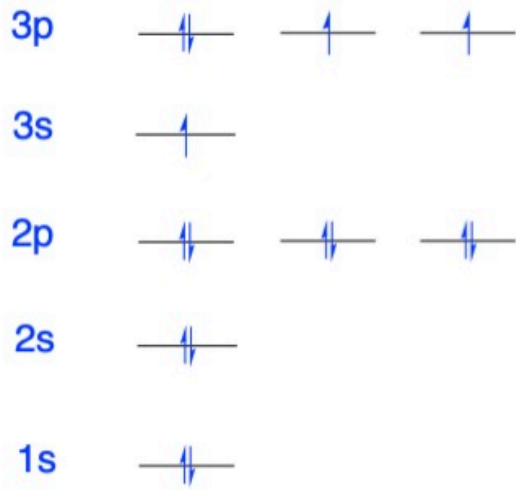
A



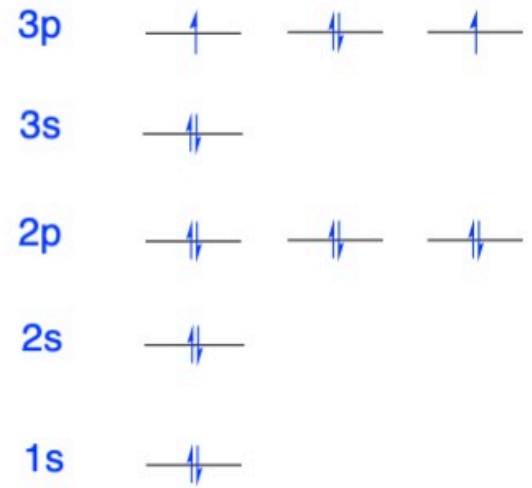
B



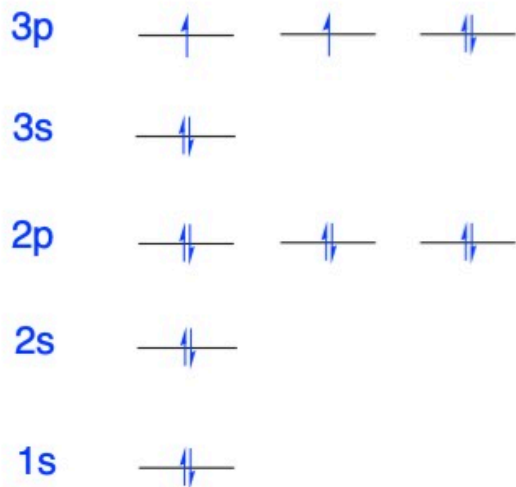
C



D



E



A

A

<b>B</b>	B
<b>C</b>	C
<b>D</b>	D
<b>E</b>	E

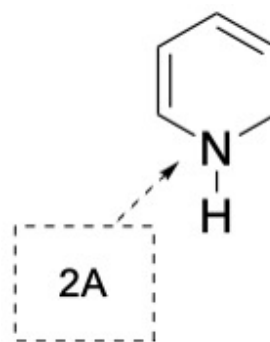
Question 2

VERSION A

VERSION B

VERSION C

(6 points) There are 3 questions to answer. Answer all versions for a total of 6 points.  
Choose the Formal Charge for the atom indicated (2A).



<b>A</b>	-2
<b>B</b>	-1
<b>C</b>	0
<b>D</b>	+1
<b>E</b>	+2

Question 3

VERSION A

VERSION B

VERSION C

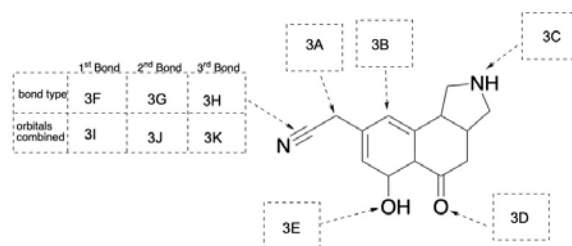
VERSION D

VERSION E

VERSION F

VERSION G

(11 points) There are 7 individual (versions A-G) questions to answer for a total of 11 points.  
Provide the hybridization of the atom indicated as 3A.

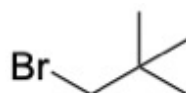


- A sp
- B sp<sup>2</sup>
- C** sp<sup>3</sup>

Question 4

Show Correct Answer Show Responses

Provide the correct name for the structure below

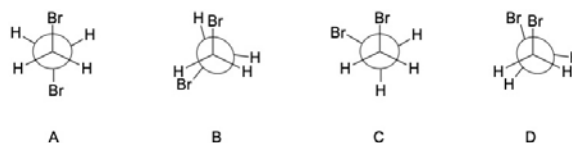


1-bromo-2,2-dimethylpropane

Question 5

Show Correct Answer Show Responses

Which of the structures below is the most stable Newman projection of 1,2-dibromoethane?



- A** A
- B B

<b>C</b>	C
<b>D</b>	D

Exported for Benjamin Appiagyei on Sat, 30 May 2020 21:56:35 GMT